



THE LEADING EUROPEAN RESEARCH  
ASSOCIATION FOR SUSTAINABLE  
& MULTIMODAL MOBILITY

---

# Shaping the future European Research Area (ERA)

## Partnerships and cooperation

ECTRI is engaged in collaborative activities where it supports the development of the ERA, working in close cooperation with other transport stakeholders, and building on the strong engagement of ECTRI Members in partnerships.

On the European scene, ECTRI fosters cooperation with major transport related organisations such as **EARPA, ERTICO, POLIS, EUCAR, UIC, UNIFE** and **UITP**. To further support the creation of the ERA in transport, the partnership with **FEHRL, FERSI** and Networks of Excellence **EURNEX** and **HUMANIST** is formalised through the European Transport Research Alliance (**ETRA**) launched in September 2012.

ECTRI also develops strong links with the **European Technology Platforms (ETP)** active in all transport areas (ERTRAC, ERRAC, ALICE, Waterborne and ACARE). ECTRI is represented in the ETPs committees and working groups in view



*ECTRI fosters cooperation with major transport related organisations*

to help defining the transport research agendas and roadmaps that can promote a truly integrative and multimodal transport system in Europe.

In 2010, ECTRI signed a Memorandum of Understanding (MoU) with the **Association for European Transport (AET)** to foster cooperation between the two associations notably in the frame of the European Transport Conference - ETC organized by AET, every year.

Internationally, building on the strong involvement of ECTRI Members with the **Transportation Research Board (TRB)** of the US National Academies, ECTRI signed in 2006, a Memorandum of Understanding (MoU) with the TRB. This MoU was renewed in 2017. It materialises through an action plan approved on a bi-annual basis, steered by a dedicated Task Force (ECTRI-TRB TF). Lastly ECTRI cooperates with the **International Transport Forum (ITF)** of the OECD in view to support the preparation of the Annual Summit and coorganises the Pre-Summit Research Day. It also contributes to the Decarbonising transport project, for which a Task Force has been created enabling the participation of ECTRI as a knowledge partner in the project.



## Advising on European transport policy

In view to support European policies and programmes and to push towards an integrated, efficient and sustainable transport system, ECTRI provides independent and evidence-based advice to decision makers in Europe. In that view ECTRI keeps close contact and interacts with the **European Commission** (EC) services dealing with transport research (DG RDI, MOVE and CONNECT). In particular ECTRI issues **position papers** to input Framework- and Work-Programmes (FP6, FP7, H2020 & Horizon Europe) and to respond to relevant consultations of the EC in the field of transport. For the complete list, please visit the ECTRI website.



A strong and effective mechanism for obtaining common positions in today's most pressing transport issues as well as achieving scientifically sound and well documented solutions to transport problems are the ECTRI **Thematic Groups (TG) and Task Force (TF)**, which are linked to the core scientific competences of ECTRI Members. At present ECTRI has six TGs in the areas of Mobility, Freight and Logistics, Economics and Policy, Safety, Security and Risk Analysis and Traffic Management; and a Task Force on European transport research and policy. A leaflet presenting more detailed information on the TGs is available.



## Promoting participation in R&D projects

---

ECTRI Members are major players and most valued providers of research capacity in transport research programmes at National and European level. ECTRI looks for increasing the number and success rate of its Members' initiated R&D projects. Through effective networking and cooperation within its Thematic Groups, ECTRI has supported the development of **many projects** by directly helping formation of consortia and proposal preparation and when funded, dissemination of research results.

In fact, ECTRI Members are involved in **233 projects** of **Horizon 2020 programme** and other transport related projects. ECTRI Members are also currently involved in **9 COST actions**.

***ECTRI Members are involved in 233 projects of the Horizon 2020 programme***

Over the past 15 years, ECTRI Members were involved in **249 projects** of the **7th Framework Programme** (FP) and Competitiveness and Innovation Framework Programme (CIP), in **113 projects** of the **6th FP**, and in **17 COST actions**.

ECTRI, as an association, also have been **participating in nine horizontal projects** of high strategic character e.g. NET-TRACK, EURFORUM, DETRA, EUTRAIN and more recently **SETRIS, SKILLFUL, TRA 2020, TRA VISIONS 2020 and BE OPEN**; all were funded by the EU FP.



SETRIS final brochure (April 2018)

## Servicing its Members through information, exchange and representation

---

Benefiting from information, knowledge exchange and representation is an essential service for the Members.

A communication plan defines the means and content of the information dissemination according to the Members' needs. In particular, ECTRI provides its Members with **advanced and targeted information** on ongoing and/or planned developments in e.g. European transport research and policy, calls for proposals and tenders, Publications, Conferences and events, and news from other EU transport and research stakeholders.

Moreover, ECTRI **promotes the activities and interests of its Members** through its website and social media (LinkedIn and Twitter). ECTRI also actively **represents them at selected events and conferences** in view to have its voice more convincingly heard in support of high quality and effective transport research in Europe.

## Fostering education and mobility

---

Fostering research and research management interactions and integration between ECTRI Members through mobility of researchers and research managers, as well as enhancing the research and management skills and competences of ECTRI Members' staff of all levels, are among the main priorities of ECTRI.

A Task Force on Education & Mobility was created to respond to this need. It promotes mobility actions among researchers/research managers, as well as organises and supports educational and training activities.

In particular, for attracting and preparing a new generation of researchers to deal with the challenges of an increasingly complex transport system, ECTRI initiated, in cooperation with FEHRL and FERSI, the biannual **Young Researchers Seminar (YRS)**. This seminar offers the opportunity to a network of young transport researchers from

ECTRI, FEHRL and FERSI Members and from research organisations across the US to gather and interact for 3 days. During the Seminar, young researchers are able to improve their presentation skills in written and oral scientific communication by tutorial means. Their tutoring is done by senior researchers who themselves are acting in a truly international scientific culture. For each edition, a dedicated Task Force (TF Young Researchers Seminar) is established to perform the knowledge transfer and support the Seminar host institution.

**Eight Seminars** have taken place since 2003 in different European locations. The next one will be held in **Thessaloniki on June 5-7, 2019**, supported by the SKILLFUL project.



## Disseminating research results

ECTRI considers the dissemination of scientific knowledge and research results as essential.



To support such dissemination, ECTRI has created the **European Transport Research Review (ETRR)**, an Open Access journal published by Springer and indexed by Thomson Reuters. The ETRR is a multidisciplinary scientific journal dedicated to transport and covering all fields of transport. Its aims are the publication of high quality scientific papers, dissemination of new ideas and developments, publication of information papers, books and conference reviews. For submitting articles or for more information: <https://etr.springeropen.com/>.

To assure optimal dissemination of research results, ECTRI also actively supports in various forms (e.g. participation in Committees, reviewing, chairs, speakers, organisation of sessions or dissemination) the major **International scientific Conferences** i.e. European Transport Conference (ETC); Transport Research Arena (TRA); TRB Annual Meetings; OECD International Transport Forum (ITF); Road Safety on Five Continents (RS5C); and World Conference on Transport Research (WCTR).

## Joining research capabilities and infrastructures

Benefiting from being an association and incorporating the foremost European transport research institutes, the **definition of common research priorities and structures** for joining Members' research capabilities and infrastructures has high relevance for ECTRI. In this regard, ECTRI has gathered full and up-to-date information on ECTRI Members' research, development, testing facilities and infrastructures, in view to increase potential sharing and use within the ECTRI community.

### ECTRI Members – Fields of Expertise

	AIT	BAS	BME	CDV	CENIT	DLR	DEUSTO	FIG-FW	HIT	IFSTTAR	ITS & IK	KTI	LNEC	POLITO	RWS-WVL	TalTech	TØI	TRL	TTI	UL	UNEW	UNIZA	UPM	UVEG	VGU TIF	VTI	VTT	VUB
Freight Transport & Logistics																												
Mobility & Travel Behaviour																												
Modeling																												
Passenger Transport																												
Safety & Security																												
Transport & Economics																												
Transport & Ergonomics																												
Transport & Telematics																												
Transport & Environment																												
Transport Infrastructure																												
Transport System Management																												
Vehicle Technology																												

Blue / green coloured blocks indicate involvement or expertise in that area for the member

## ECTRI in a nutshell

The European Conference of Transport Research Institutes (ECTRI) is an international non-profit association, founded in 2003. It is the first attempt to unite the forces of the foremost multimodal transport research organisations across Europe and to thereby promote the excellence of European transport research. Today, it includes 28 major transport research institutes or universities from 21 European countries. Together, they account for more than 4,000 researchers in the field of transport.

## Vision

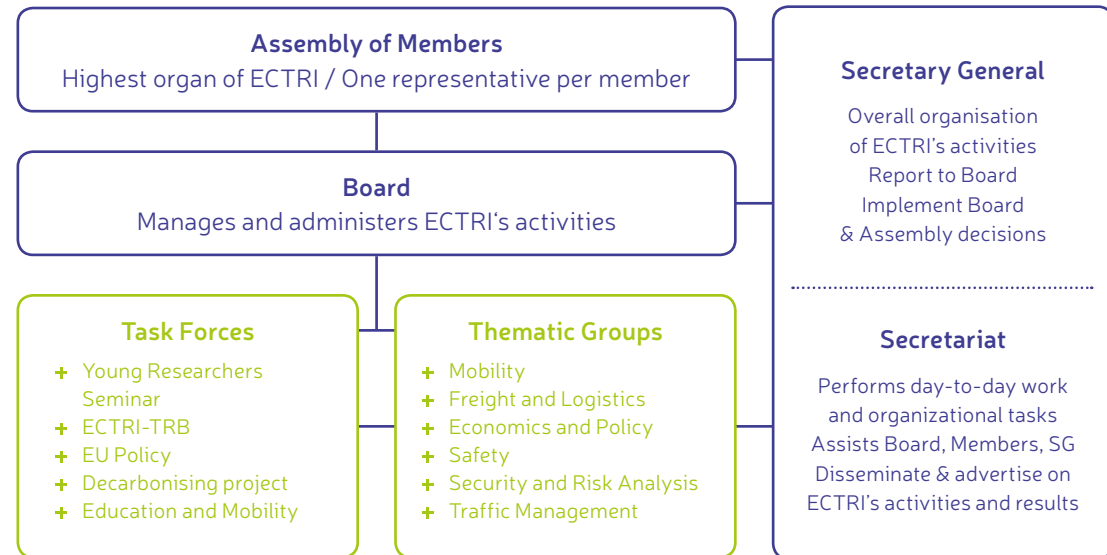
ECTRI is the leading European research association for sustainable and multimodal mobility.

## Mission

ECTRI promotes green, safe, efficient, and inclusive transport for people and goods by:

- + Promoting transport research and enhancing its scientific quality and effectiveness;
- + Providing independent, evidence-based advice to decision-makers in Europe;
- + Incorporating and representing the foremost European transport research institutes and universities.

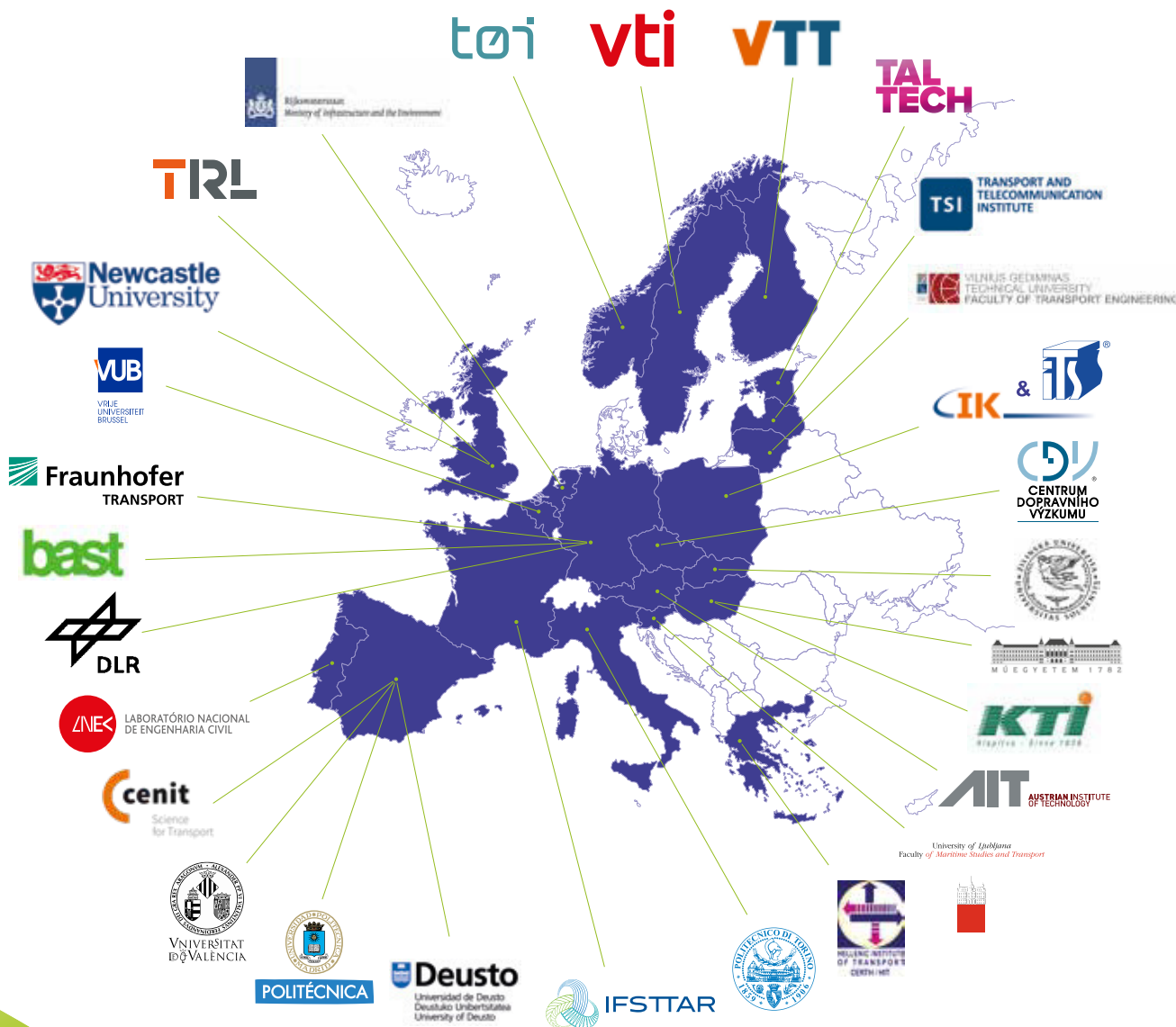
## Organisational Structure



## Strategic objectives

ECTRI's vision and mission are implemented through six strategic objectives:

- + Shaping the future European Research Area (ERA)
- + Promoting participation in R&D projects
- + Servicing its Members through information, exchange and representation
- + Fostering education and mobility
- + Disseminating research results
- + Joining research capabilities and infrastructures



## Membership

ECTRI Members are research establishments with head offices in Europe, full legal personality and tasked with considerable activities of public interest in the field of transport research (and in particular in multimodal issues).

### Interested in becoming a Member?

Download our brochure on key information and conditions and the application form from the website.



## Contact

### ECTRI Office

Rue du Trône 98 • 1050 Brussels • Belgium

info@ectri.org

+32 (0)2 500 56 88

[www.ectri.org](http://www.ectri.org)

@ECTRInews