



ECTRI – An Overview

Guy Bourgeois, ECTRI President

November 3rd, 2010, Lisbon
30th Anniversary of the LNEC transportation
Department

ECTRI Origin

- Established in 2003 as a non-profit association
- Objective: to promote integrated surface transport research and development in Europe
- First attempt to:
 - Unite the forces of the **foremost multimodal transport research centres** across Europe
 - thereby **promote the excellence of European transport research**

Vision

“An efficient, integral European transport system that provides completely safe, secure and sustainable mobility for people and goods”



Soria Moria castle, by T. Kittelsen. Travelling towards a far away vision.

Mission

To provide the scientifically based competence, knowledge, and advice necessary to move towards its vision

To this purpose, ECTRI

- endeavours to **provide practically applicable answers** to questions of **policy formulation**
- brings together the **foremost, policy relevant, interdisciplinary scientific competence** available in Europe, capable of carrying out state-of-the-art primary and applied research in transport
- strives to continually **improve the quality and overall efficiency of European transport research**
- continually **looks for innovative solutions** to the present and future challenges in the field of transport
- endeavours to **provide European transport research institutes with the conditions** necessary for the **development, maintenance and exploitation of their scientific excellence**

Short and Long Term Goals: ECTRI aims to...

- be a closely knit and **institutionalised network of competence centres** within European transport planning and research
- be the foremost **representative of European transport research institutes** and the only **important organisation with a cross-cutting, mode-neutral perspective** on transport planning and policy
- include the **foremost centres of excellence in transport research** and integrate organisations from the new member states, acceding and Western Balkan countries
- be the **preferred scientific partner of dialogue** on transport planning and policy to the **European Commission**
- to develop and support **leading and widely recognised channels of dissemination of transport research results** (like the European Transport Research Review – ETRR),
- encourage its members to be the most **active and successful contributors to the EC framework programs**
- be perceived globally as the **unique, legitimate representative of the European transport research community**

ECTRI Members

27 major transport research institutes or universities from 20 European countries



Member Institutions (1/2)

AIT	Austrian Institute of Technology	www.ait.ac.at
BAST	Federal Highway Research Institute Germany	www.bast.de
CDV	Transport Research Centre	www.cdv.cz
CEDEX	Center for Studies and Experimentation of Public Works	www.cedex.es
CENIT	Centre for Innovation in Transport	www.cenit.es
DLR	German Aerospace Center	www.dlr.de
DTU Transport	Danish Technical University - Danish Transport Research Institute	www.transport.dtu.dk
DVS	Rijkswaterstaat Centre for Transport and Navigation	www.rws.nl
FHG-FVV	Fraunhofer Transport Alliance	www.verkehr.fraunhofer.de
HIT	Hellenic Institute of Transport	www.certh.gr/hit.en.aspx
INRETS	French National Institute For Transport And Safety Research	www.inrets.fr
ITS & IK	Motor Transport Institute & Railway Institute	www.its.home.pl www.ik.pl
KTI	Institute for Transport Sciences	www.kti.hu

Member Institutions (2/2)

LET	Transport Economics Laboratory	www.let.fr
LNEC	National Laboratory for Civil Engineering Portugal	www.lnec.pt
POLITO	Politecnico di Torino, Department of Hydraulics, Transports & Civil Infrastructures	www.polito.it
SWOV	Dutch National Road Safety Research Institute	www.swov.nl
TTI	Transport and Telecommunication Institute Latvia	www.tsi.lv
TNO	Netherlands Organisation for applied Scientific Research	www.tno.nl
TOI	Institute of Transport Economics	www.toi.no
TRL	Transport Research Laboratory Limited	www.trl.co.uk
TTEF	University of Belgrade, Faculty of Transport and Traffic Engineering	www.sf.bg.ac.yu
UPM	Polytechnic University of Madrid – Higher Technical School of Civil Engineering	www.caminos.upm.es
VG TU-TMI	Vilnius Gediminas Technical University - Transport Research Institute	www.vtu.lt/english/vgtu
VTI	Swedish National Road and Transport Research Institute	www.vti.se
VTT	Technical Research Centre of Finland	www.vtt.fi
VÚD	Transport Research Institute	www.vud.sk

Transport mode coverage



	AIT	BASt	CDV	CEDEX	CENIT	DLR	DTU transp.	DVS	FhG-FVW	HIT	INRETS	ITS & IK	KTI	LET	LNEC	POLITO	SWOV	TNO	TØI	TRL	TTEF	TTI	UPM	VTI	VTT	VGTV TMI	VÚD
Road Transport																											
Rail Transport																											*
Waterborne Transport															*	*											
Air Transport					*						*				*			*									
Cross Cutting Work																											

* marginal

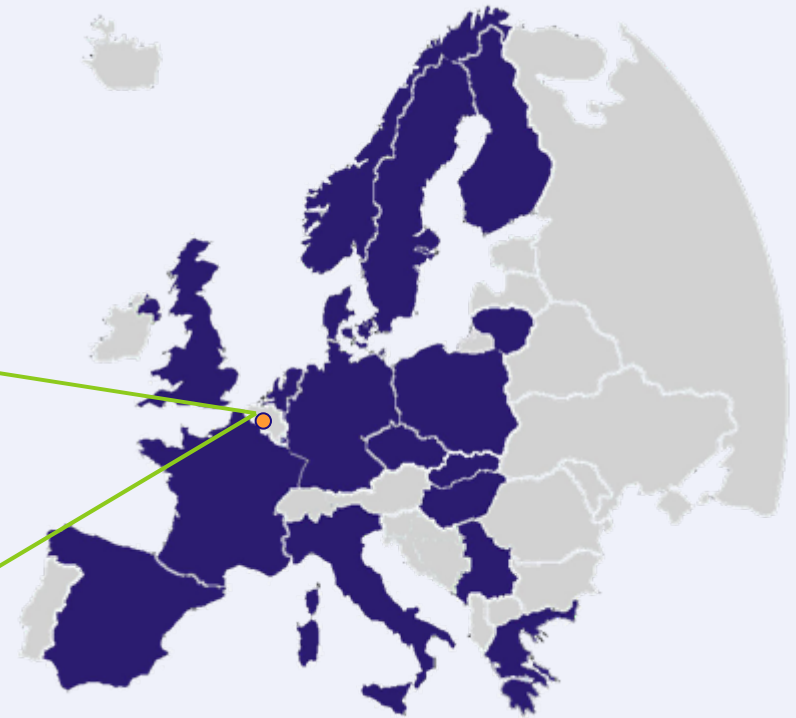
Fields of Expertise

	VÚD	VG TU TMI	VTT	VTI	UPM	TTI	TTEF	TRL	TØI	TNO	SMOV	POLITO	LNEC	LET	KTI	ITS & IK	INRETS	HIT	FHG-FVV	DVS	DTU transp.	DLR	CENIT	CEDEX	CDV	BAST	AIT
Freight Transport & Logistics																											
Mobility & Travel Behaviour																											
Modeling																											
Passenger Transport																											
Safety & Security																											
Transport & Economics																											
Transport & Ergonomics																											
Transport & Telematics																											
Transport & Environment																											
Transport Infrastructure																											
Transport System Management																											
Vehicle Technology																											

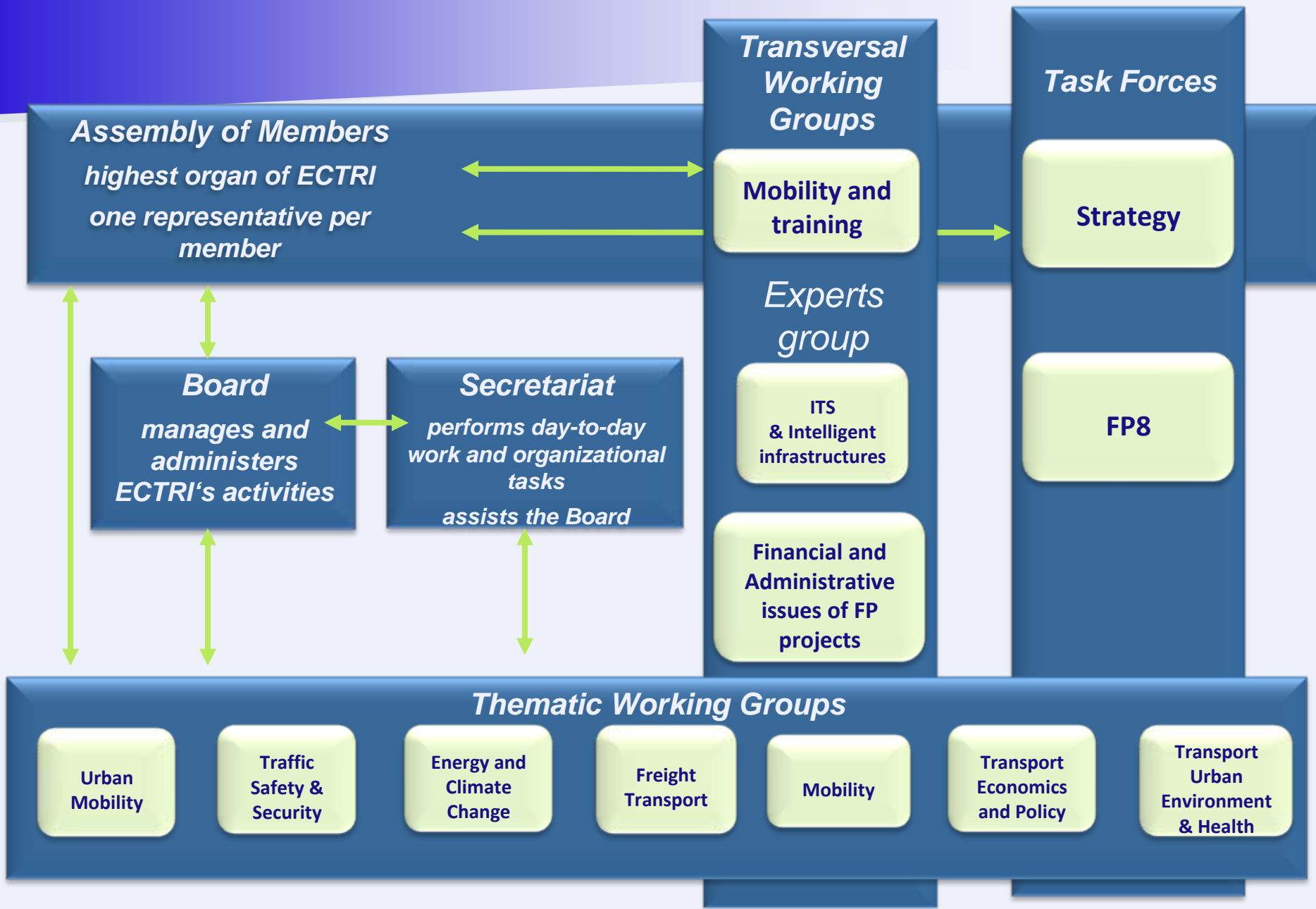
Current ECTRI Location



**Offices and
permanent staff:**
Brussels, Belgium
Rue du Trône 98
Metro: Trône

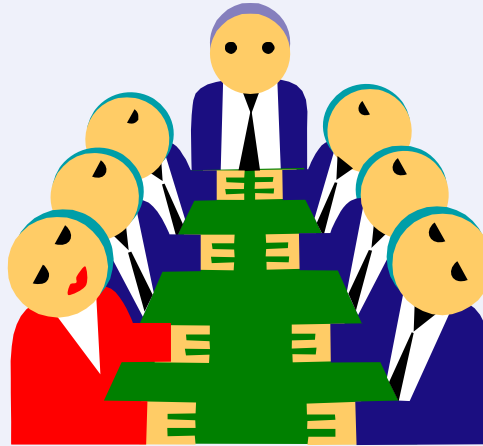


ECTRI Structure



ECTRI Board 2009-2011

(as from 27 Jan. 2009)



President:

Guy Bourgeois – INRETS, France

Vice-President:

Witold Olpinski – CNTK, Poland

Secretary:

Christian Piehler – DLR, Germany

Treasurer:

Cristina Pronello – POLITO, Italy

Members:

Alberto Compte – CEDEX, Spain

Niels Buus Kristensen – DTU Transport, Denmark

Transversal Working Groups

■ Mobility and training

Promotion of human resources and mobility & Marie Curie actions

- ☐ Contribution to FP7/FP8 on Mobility and Training and elaboration of a road map for the development of a European PhD and research management school in Transport (partly linked to DETRA FP7 project)
- ☐ Together with FERSI and FEHRL, ECTRI organisation of Young Researchers Seminars to help further their education and careers; last YRS took place on 3-5 June 2009, Torino, Italy; next YRS in June 2011 in Copenhagen, Denmark
- ☐ participated in the YEAR 2010 contest (in the frame of TRA) – Young researchers competition

Thematic Working Groups

- Urban mobility (*lead: INRETS*)
- Traffic safety & security (*DVS*)
- Energy and climate change (*INRETS*)
- Freight transport (*DLR*)
- Mobility (socio-economic, demographic, policy aspects) (*INRETS*)
- Transport economics and policy (*INRETS*)
- Transport, Urban Environment, and Health (*TOI*)


Purpose

- increase ECTRI's competence in science, research and development
- promote interaction between researchers of member institutions
- enhance international transport research cooperation
- support establishing of consortia

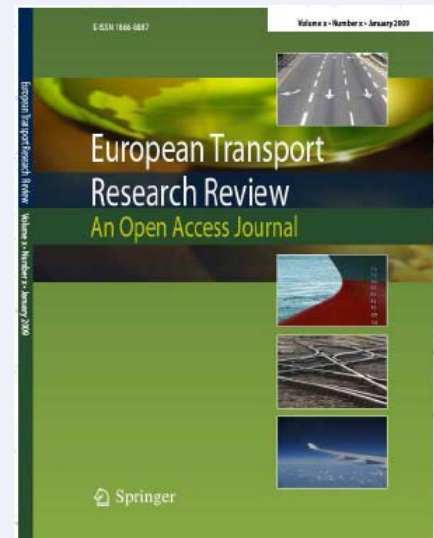


Electronic Journal

■ European Transport Research Review (ETRR)

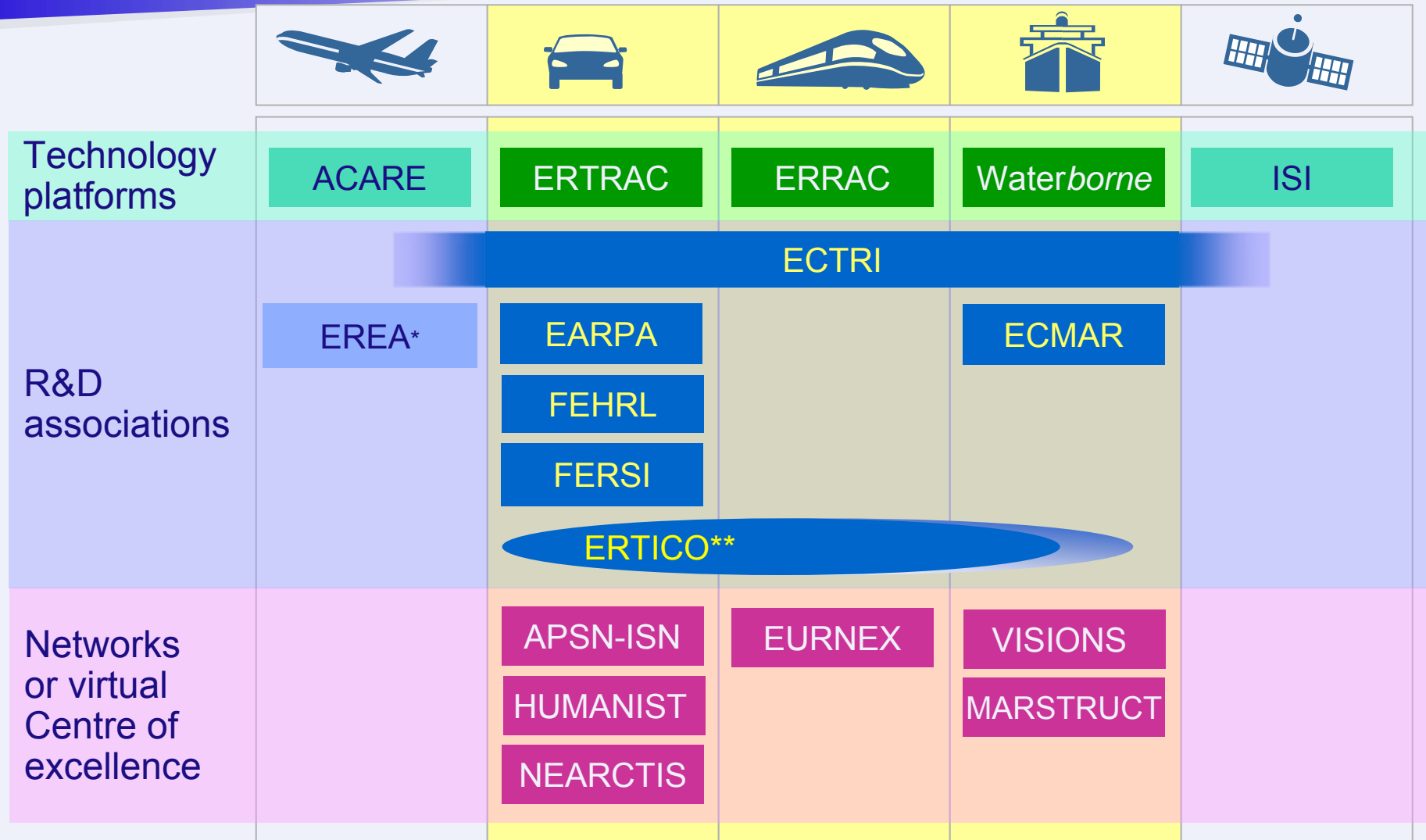
- ☐ an open access journal; wide availability to all researchers with a minimum of constraints and costs
- ☐ provides focus on issues of special interest to European transport research, its funding bodies and supervising organisations
- ☐ First Volume (4 issues) in 2009, Vol. 2 (Issues March and June 2010)
- ☐ published by  **Springer** Verlag through contract with ECTRI
the language of science

- ☐ Journal website: www.springer.com/12544
- ☐ For authors: online manuscript submission, review and tracking: www.editormanager.com/etr



ECTRI in the Transport Research Area

Major Technology Platforms – Associations – Networks of Excellence



*Association of European Research Establishments in Aeronautics

**Public/Private Partnership

Visionary concepts for vessels and floating structures
Network of excellence in marine structures

Interaction with European and International Organisations

TRB

MoU with ECTRI
signed in January 2006

International Interfacing



Participation in Technology Platforms

presence and/or membership in
plenaries, steering groups, WGs

ECTRI

Cooperation with other Associations

contacts / common
Interests, some
common members



BAST, CDV, CERTH/HIT,
DTU-Transport, INRETS,
KTI, LNEC, SWOV, TOI,
TRL, VTI, VTT

AIT, BAST, CDV, CEDEX, DVS,
KTI, LNEC, TRL, VTI, VUD

FEHRL



Members participation in European Projects

■ 7th FP and CIP

118 transport research projects, among them

- 2 Networks of Excellence (incl. NEARCTIS), 82 Collaborative Projects, 32 Coordination and Support Actions, 2 Marie-Curie (ITN), 2 CIP

■ 6th FP

113 transport research projects, among them

- 6 Networks of Excellence, including HUMANIST, EURNEX and APSN (supported by ECTRI), 35 Integrated Projects, 41 Specific Targeted Research Projects, 28 Coordination and Support Actions and 3 Marie Curie actions (Transfer of knowledge)

■ COST

European Cooperation in the Field of Scientific and Technical Research – Intergovernmental Network

- 10 running actions in the ‘Transport and Urban Development’ domain

Various thematic areas / all surface transport modes: rail, road, maritime, air, multimodal

In FP6, ECTRI

was the coordinator of

NET-TRACK - www.ectri.org/nettrack



Exchange of experience and transfer of knowledge in research management and soft research infrastructures issues between scientific communities active in transport research in the member / new member states, accession countries, and Western Balkan countries

was a partner in

EURFORUM - www.eurforum.net



Research priorities for the urban mobility sector and creating a forum of stakeholders on urban mobility research; recommendations for the coordination of European research on urban mobility issues; Strategic Research Agenda issued

In FP7, ECTRI

is a partner in

YEAR 2010 - <http://year2010.fehrl.org>



The Young European Arena of Research 2010 is a competition for early-stage researchers exploring the area of surface transport within their research. The competition gives the students an opportunity to showcase their work to experts within the field, both on the web and, for the best applicants, at the Transport Research Arena conference, TRA2010 in Brussels in June 2010.

DETRA – <http://detra.fehrl.org>

The concept of DETRA derives from the so-called Lyon Declaration. In 2008, the Lyon Declaration signatories i.e ECTRI, FERSI, FEHRL, EURNEX, HUMANIST, ISN and NEARCTIS committed themselves to work together on the deepening of the European Research Area (ERA) objectives in transport in order to address the Grand Challenges. From this commitment grew the objective to create a European Transport Research Alliance (ETRA) that could strengthen the transport domain. The key priorities of this Alliance are to examine the strengths, weaknesses, opportunities and threats (SWOT) in the domain and to develop common understanding and approaches to reducing fragmentation and overcoming barriers.

is associate partner in

NEARCTIS - <http://www.nearctis.org/>



NEARCTIS (A Network of Excellence for Advanced Road Cooperative Traffic management in the Information Society) is an Academic Network gathering the main teams working on the field of traffic management and optimisation, with a particular focus on cooperative systems for road traffic optimisation, but it covers a wider scope as it appears that cooperative systems have to be integrated into the whole traffic management systems.

In FP7, ECTRI

is supporting directly 2 projects involving only ECTRI members

METRONOME

METRONOME deals with the methodology for evaluation of projects impact in the field of transport. The aim of the project is to evaluate the contribution of the 800 EC funded transport research projects to the current key themes of the European Policies. It is led by VTT and involves 5 ECTRI members: UPM, TRL, CETH, CDV and DVS.

CLOSER – <http://www.closer-project.eu/>

CLOSER aims to improve the connection/interfaces between long and short-distance networks. The project led by CEDEX, Spain involves 8 ECTRI members: INRETS, TOI, FhG-FVV, VTT, CDV, CETH and VGTU-TMI. It started in January 2010.

ECTRI and European Policies (including FPs)

ECTRI as counterpart/advisor to the EC



Inputs / contributions

- FPs updates / working programs
- consultations
- EC papers (green / white papers), etc



Benefits:

"Economies of scale" of a collaborating European research community

Position reflected in European Policies

Members find areas of interest covered in calls



Other Activities

■ International interfacing

- TRB (US Transportation Research Board)
MoU signed in January 2006 in Washington, D.C
- OECD/ITF (International Transport Forum - A Worldwide Platform for Transport Ministers, Industry and Civil Society)

■ Participation and presence in conferences

□ International

- TRB Annual Meeting
- World Congress on Intelligent Transport Systems
- World Conference on Transport Research
- World Congress on Railway Research
- Road Safety on Four Continents

□ European

- Transport Research Arena
- European Transport Conference
- Intelligent Transport Systems Europe
- EC conferences

Need Further Information – Have Questions?



www.ectri.org

info@ectri.org

or contact

Caroline Alméras, Secretary General

caroline.almeras@ectri.org / +32 2 508 14 13