



Internal Organisation and cooperation for proposals formulation through ECTRI

*7th Framework Programme for Research and
Technological development*

*Third Call of thematic Priority 7: Transport and Aeronautics
Fourth Call for the activities of International Cooperation*

*George Charalampous
CERTH-HIT*

Thessaloniki, 1st of October 2009

ECTRI Origin

- Established in 2003 as a non-profit association
- Objective: to promote integrated surface transport research and development in Europe
- First attempt to:
 - Unite the forces of the **foremost multimodal transport research centres** across Europe
 - thereby **promote the excellence of European transport research**

Vision

“An efficient, integral European transport system that provides completely safe, secure and sustainable mobility for people and goods”



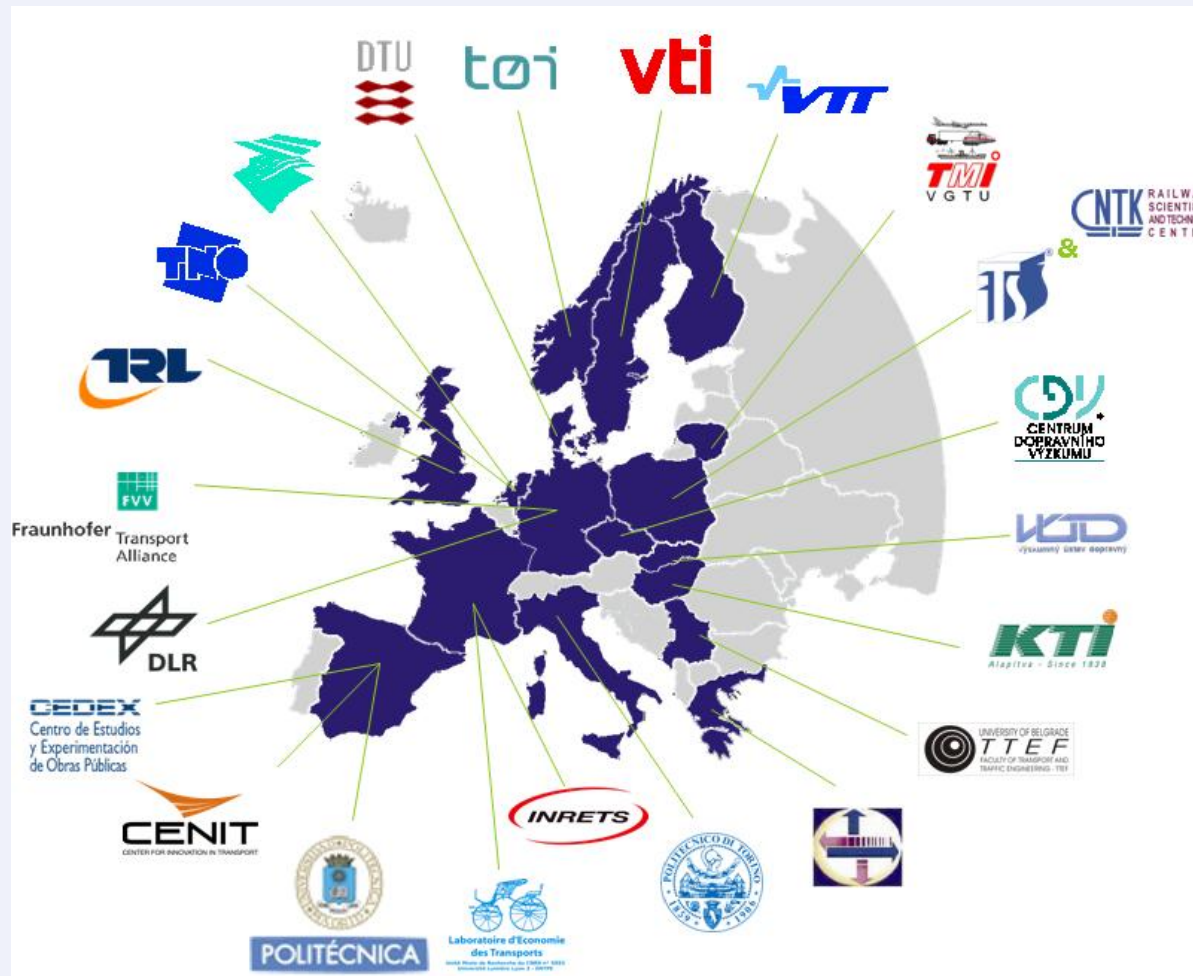
Soria Moria castle, by T. Kittelsen. Travelling towards a far away vision.

Short and Long Term Goals: ECTRI aims to...

- be a closely knit and **institutionalised network of competence centres** within European transport planning and research
- be the foremost **representative of European transport research institutes** and the only **important organisation with a cross-cutting, mode-neutral perspective** on transport planning and policy
- include the **foremost centres of excellence in transport research** and integrate organisations from the new member states, **acceding and Western Balkan countries**
- be the **preferred scientific partner of dialogue** on transport planning and policy **to the European Commission**
- to develop and support **leading and widely recognised channels of dissemination of transport research results** (like the European Transport Research Review – ETRR),
- encourage its members to be the most **active and successful contributors to the EC framework programs**
- be perceived globally as the **unique, legitimate representative of the European transport research community**

ECTRI Members

22 major transport research institutes or universities from 17 European countries



Member Institutions

CDV	Transport Research Centre	www.cdv.cz
CEDEX	Center for Studies and Experimentation of Public Works	www.cedex.es
CENIT	Centre for Innovation in Transport	www.cenit.es
DLR	German Aerospace Center	www.dlr.de
DTU Transport	Danish Technical University - Danish Transport Research Institute	www.transport.dtu.dk
DVS	Rijkswaterstaat Centre for Transport and Navigation	www.rws.nl
FHG-FVV	Fraunhofer Transport Alliance	www.verkehr.fraunhofer.de
HIT	Hellenic Institute of Transport	www.certh.gr/hit.en.aspx
INRETS	French National Institute For Transport And Safety Research	www.inrets.fr
ITS & CNTK	Motor Transport Institute & Railway Scientific and Technical Centre	www.its.home.pl www.cntk.pl
KTI	Institute for Transport Sciences	www.kti.hu
LET	Transport Economics Laboratory	www.let.fr
POLITO	Politecnico di Torino, Department of Hydraulics, Transports & Civil Infrastructures	www.polito.it
TNO	Netherlands Organisation for applied Scientific Research	www.tno.nl
TOI	Institute of Transport Economics	www.toi.no
TRL	Transport Research Laboratory Limited	www.trl.co.uk
TTEF	University of Belgrade, Faculty of Transport and Traffic Engineering	www.sf.bg.ac.yu
UPM	Polytechnic University of Madrid – Higher Technical School of Civil Engineering	www.caminos.upm.es
VG TU-TMI	Vilnius Gediminas Technical University - Transport Research Institute	www.vtu.lt/english/vgtu/
VTI	Swedish National Road and Transport Research Institute	www.vti.se
VTT	Technical Research Centre of Finland	www.vtt.fi
VÚD	Transport Research Institute	www.vud.sk

Traffic Sector Activities



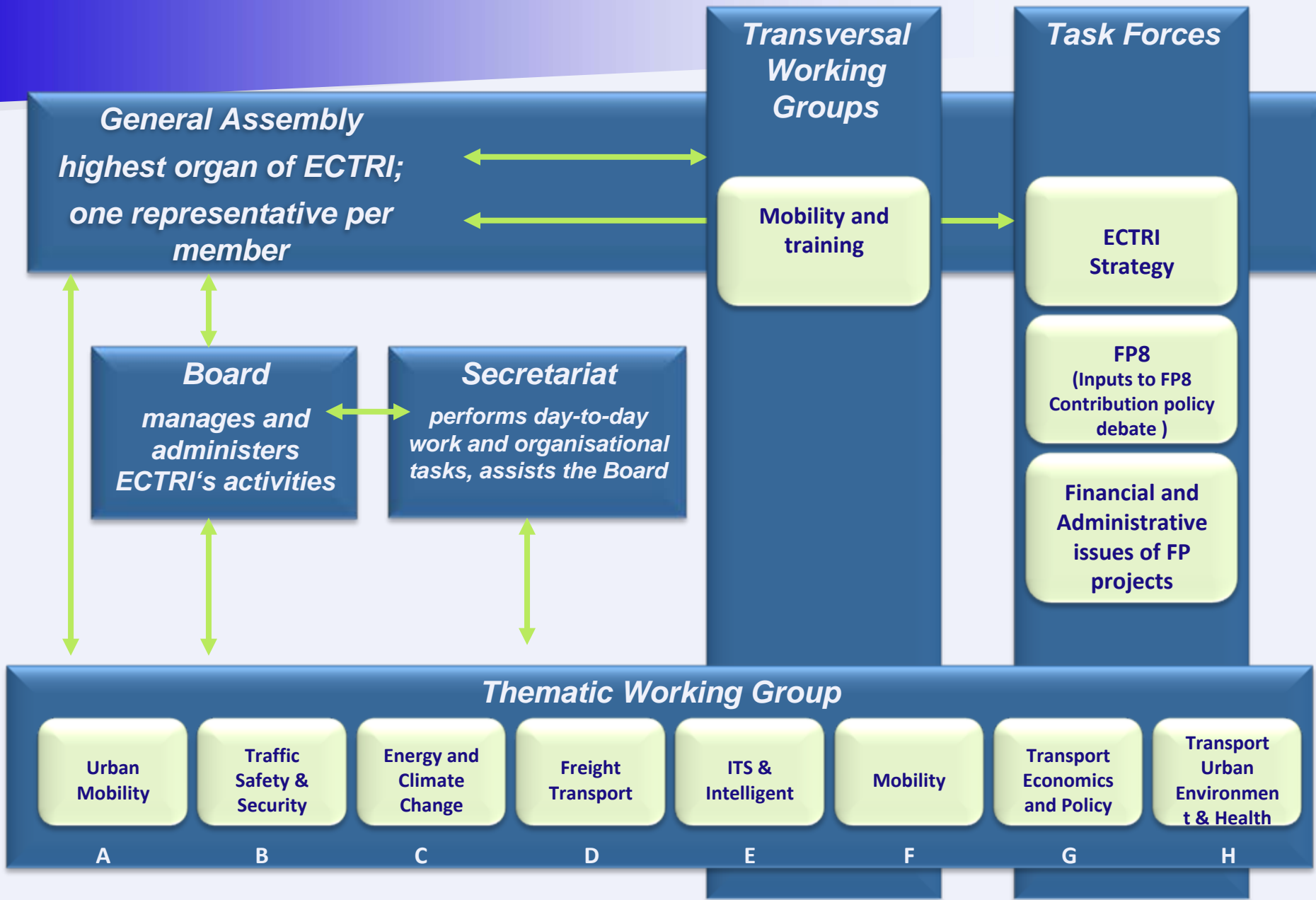
	CDV	CEDEX	DLR	DTU Transp.	DVS	FhG-FVV	HIT	INRETS	ITS & CNTK	KTI	POLITO	TNO	TØI	TRL	TTEF	UPM	VTI	VTT	VG TU TMI	VÚD
Road Transport																				
Rail Transport																				I
Waterborne Transport											I									
Air Transport								I				I								
Cross Cutting Work																				

– marginal

ECTRI Fields of Expertise

	CDV	CEDEX	DLR	DTU Transp.	DVS	FhG-FWV	HIT	INRETS	ITS & CNTK	KTI	POLITO	TNO	TØI	TRL	TTEF	UPM	VTI	VTT	VG TU TMI	VÚD
Freight Transport & Logistics																				
Mobility & Travel Behaviour																				
Modeling																				
Passenger Transport																				
Safety & Security																				
Transport & Economics																				
Transport & Ergonomics																				
Transport & Telematics																				
Transport & Environment																				
Transport Infrastructure																				
Transport System Management																				
Vehicle Technology																				

ECTRI's Structure



Transversal Working Groups

■ Mobility and training

Promotion of human resources and mobility & Marie Curie actions

- ☐ ECTRI aims to make a contribution to FP7/FP8 on Mobility and Training and to elaborate a road map for the development of a European PhD and research management school in Transport
- ☐ Together with FERSI and FEHRL, ECTRI as of today has organised four Young Researchers Seminars to help further their education and careers; last YRS took place on 3-5 June 2009, Torino, Italy; next YRS in 2011
- ☐ will participate in the Young European Arena for Research (YEAR 2010) contest (TRA)

Electronic Journal

■ European Transport Research Review (ETRR)

- ☐ an open access journal; wide availability to all researchers with a minimum of constraints and costs
 - ☐ provides focus on issues of special interest to European transport research, its funding bodies and supervising organisations
 - ☐ first issue March 2009, second issue July 2009
 - ☐ published by Springer through contract with ECTRI
-
- ☐ Journal website: www.springer.com/12544
 - ☐ For authors: online manuscript submission, review and tracking: www.editormanager.com/etrr



Thematic Working Groups

- Urban mobility (*lead: INRETS*)
- Traffic safety & security (*DVS*)
- Energy and climate change (*DLR*)
- Freight transport (*DLR*)
- Intelligent transport systems and infrastructures (*INRETS*)
- Mobility (socio-economic, demographic, policy aspects) (*DTU-Tr.*)
- Transport economics and policy (*INRETS*)
- Transport, Urban Environment, and Health (*TOI*)

Purpose

- increase ECTRI's competence in science, research and development
- promote interaction between researchers of member institutions
- enhance international transport research cooperation
- support establishing of consortia



TWG A: Urban Mobility

The ECTRI Thematic Working Group on Urban Mobility has been created in 2004,

■ TWG Objectives

- Preparation of a strategic research agenda (SRA) on urban mobility & definition of a working program in this field,
- Define a working programme in this area for actions at short, medium and long terms
- Proposal of common reflections about research needs in urban mobility to European, national and regional institutions

The Thematic Working Group is currently composed of 32 experts from 19 institutes



TWG B: Traffic Safety and Security

■ TWG Objectives

- identify target groups and working structures to ensure safety research and practices based on high quality scientific
- approach, e.g. APSN, EURNEX, HUMANIST networks of excellence
- Become information resource for policy makers at European and national level
- establish influence in Europe equivalent to TRB (Safety) in North America

The TWG is currently composed of 21 experts from 17 institutes



TWG C: Energy and Climate change

■ TWG Objectives

- development of TWG matrix of experience and identification of knowledge gaps (topics subject to a future ranking process)
- Development of document/resource database (server-based)
- Focus Research on mission measurements, technology assessment, soft measures, policy assessment, tool development, behaviour
- Identification of areas that have been subject to research
- Identification of knowledge gaps to allow proposals at a specific research agenda
- Preparation of FP7 proposals

The TWG is currently composed of 24 experts from 16 institutes



TWG D: Freight Transport

■ TWG Objectives

- Answering to EC requests related to freight transport issues
- Producing a strategic paper for freight transport (long run)
- Influencing the EC framework program and policy issues (at a later stage)
- Represent ECTRI in freight transport related activities and bodies and present its position
- Producing successful FP7 proposals

The TWG is currently composed 25 experts from 16 institutes



TWG E: Intelligent Transport Systems & Intelligent Infrastructures

■ TWG Objectives

- Identification of strategic research needs (research problems; how to work towards an European research agenda on ITS (2009, 2010). What is ITS, how large are the spectra
- focus on 2008 FP work program

The TWG is currently composed of 23 experts from 16 institutes



TWG F: Mobility

(socio-economic, demographic i.e. elderly & disabled people,
policy aspects)

■ TWG Objectives

- better understanding of mobility behavior: main interest is to understand underlying factors and determinants affecting
- influencing mobility behavior: basic question is how sustainable mobility behavior can be promoted
- Identification of research gaps in above mentioned fields
- Formulation of strategic research topics on European level
- Developing a strategic research agenda
- Promoting FP7 consortia

The TWG is currently composed of 15 experts from 12 institutes



TWG G: Transport Economics & Policy

■ TWG Objectives

- Define research program on common fields of interest and promote scientific collaborations in these fields:
 - economic evaluation (demand and supply estimation, evaluation of projects, valuation of non-market goods, ex ante and ex post evaluation...)
 - regulation and financing (pricing and taxation, financing, creation of competitive market transport policies)
- preparation of FP7 proposals

The TWG is currently composed of 35 experts from 21 institutes



TWG H: Transport, Urban Environment, and Health

■ TWG Objectives

- Bringing together ECTRI researchers working within the field of noise and noise related quality of life and health issues
- Providing a platform for further areas of cooperation
- Group research activities focused on transport related emissions and their impact on welfare and health, and on dedicated
- Establishing and sharing common knowledge resources
- Establishing and providing access to common ECTRI toolkits, and methodologies
- Submitting proposals for FP7 calls

The TWG is currently composed of 14 experts from 9 institutes



Members participation in European Projects

■ 6th Framework Program

Nearly 120 transport research projects, among them

- 3 Networks of Excellence: HUMANIST, EURNEX and APSN
- 19 Integrated Projects
- as well as Specific Targeted Research Projects, Coordination and Support Actions, and Marie Curie actions (Transfer of knowledge)

■ 7th FP (retained for negotiation)

Nearly 53 transport research projects, among them

- 1 Network of Excellence: NEARCTIS
- Collaborative Projects (7 IP – 29 FP)
- as well Coordination and Support Actions (6 CA – 10 SA)

■ COST

European Cooperation in the Field of Scientific and Technical Research

– Intergovernmental Network

4 running actions in the ‘Transport and Urban Development’ domain

various thematic areas / all surface transport modes: rail, road, maritime, air, multimodal

In FP6, ECTRI

was the coordinator of

NET-TRACK - www.ectri.org/nettrack



Exchange of experience and transfer of knowledge in research management and soft research infrastructures issues between scientific communities active in transport research in the member / new member states, **accession countries, and Western Balkan countries**

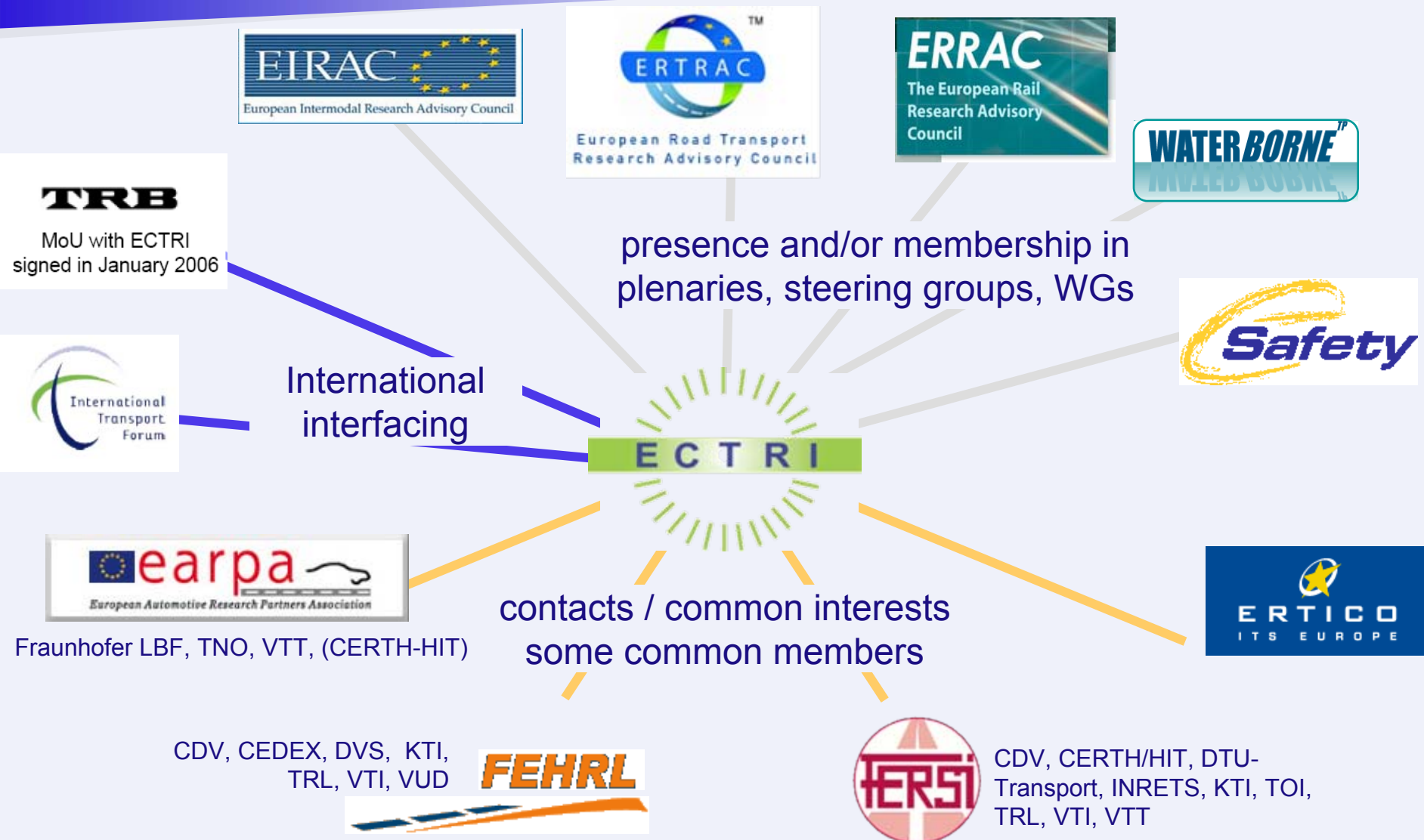
was a partner in

EURFORUM - www.eurforum.net



Research priorities for **the urban mobility** sector and creating a forum of stakeholders on urban mobility research; recommendations for the coordination of European research on urban mobility issues; **Strategic Research Agenda issued**

Interaction with Relevant European Organisations



ECTRI and European Policies

(including FP7)

Advice / recommendations based on societal needs in surface transport



Inputs / contributions

- FP 7 updates / work programmes
- Consultations to EC papers and policies (green / white papers, regulations, directives,... etc)



Benefits:

"Economies of scale" of a collaborating European research community

Position reflected in European Policies

Members find areas of interest covered in calls



Need Further Information – Have Questions?



www.ectri.org
info@ectri.org

or contact

Caroline Alméras, Project officer,

caroline.almeras@ectri.org /

+33 4 72142322

Dietmar Wurzel, Secretary General:

dietmar.wurzel@ectri.org /

+32 2 5000-846

On behalf of
ECTRI TWG: Freight Transport

George Charalampous

Gharala@certh.gr

Centre for Research and Technology Hellas /
Hellenic Institute of Transport