



The leading European research association
for sustainable and multimodal mobility

ECTRI in a nutshell

The European Conference of Transport Research Institutes (ECTRI) is an international non-profit association, founded in 2003. It is the first attempt to unite the forces of the foremost multimodal transport research organisations across Europe and to thereby promote the excellence of European transport research. Today, it includes 27 major transport research institutes or universities from 20 European countries. Together, they account for more than 4,000 researchers in the field of transport.

Vision

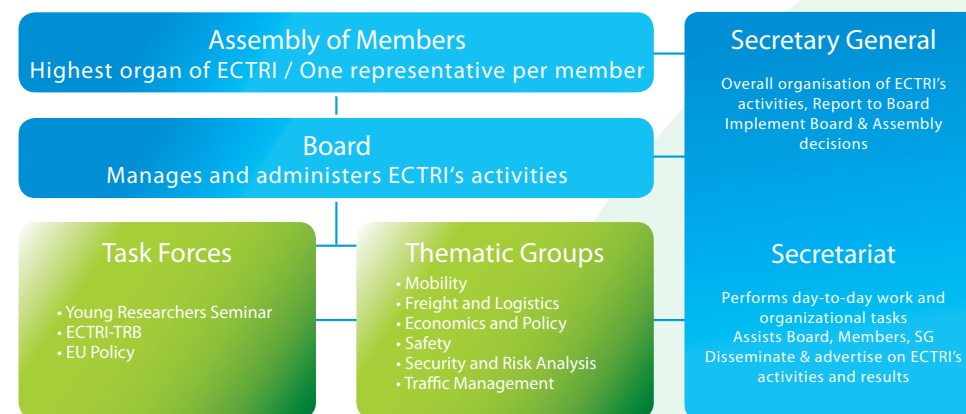
ECTRI is the leading European research association for sustainable and multimodal mobility.

Mission

ECTRI promotes green, safe, efficient, and inclusive transport for people and goods by:

- Promoting transport research and enhancing its scientific quality and effectiveness;
- Providing independent, evidence-based advice to decision-makers In Europe;
- Incorporating and representing the foremost European transport research institutes and universities.

Organisational Structure



Strategic objectives

ECTRI's vision and mission are implemented through six strategic objectives:

- Shaping the future European Research Area (ERA)
- Promoting participation in R&D projects
- Servicing its Members through information, exchange and representation
- Fostering education and training
- Disseminating research results
- Joining research capabilities and infrastructures

Shaping the future European Research Area (ERA)

Partnerships and cooperation

ECTRI is engaged in collaborative activities where it supports the development of the ERA, working in close cooperation with other transport stakeholders, building on the strong presence and involvement of ECTRI Members.

On the European scene, ECTRI fosters cooperation with major transport related organisations such as EARPA, ERTICO, POLIS, EUCAR, UIC, UNIFE and UITP. To further support the creation of the ERA in transport, the partnership with FEHRL, FERSI and Networks of Excellence EURNEX and HUMANIST is formalised through the European Transport Research Alliance (ETRA) launched in September 2012.

ECTRI also develops strong links with the European Technology Platforms (ETP) and forum active in all transport areas (ETRAC, ERRAC, ALICE, Waterborne, iMobility). ECTRI is represented in the ETPs committees and working groups in view to help defining the needed transport research agendas that can promote a truly integrative and multimodal transport system in Europe.

ECTRI is also represented in some European initiatives such as the Joint Programming Initiative (JPI) Urban Europe or projects Advisory Groups (e.g. CIVITAS, Electromobility plus).

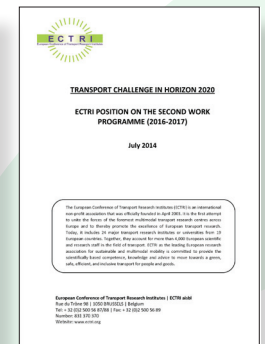
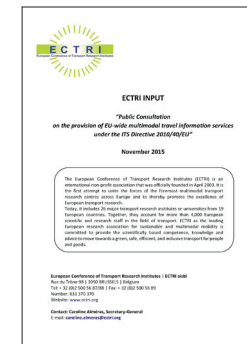
In 2010, ECTRI signed a Memorandum of Understanding (MoU) with the Association for European Transport (AET) to foster cooperation between the two associations notably in the frame of the European Transport Conference - ETC organized by AET, every year.

in 2006, a Memorandum of Understanding (MoU) with the TRB. This MoU is materialised through an action plan approved on a bi-annual basis, steered by a dedicated Task Force (ECTRI-TRB TF). Lastly ECTRI cooperates with the International Transport Forum (ITF) of the OECD in view to support the preparation of the Annual summit.

Advising on European transport policy

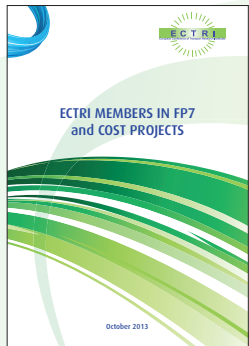
In view to support European policies and programmes and to push towards an integrated, efficient and sustainable transport system, ECTRI provides independent and evidence-based advice to decision makers in Europe. In that view ECTRI keeps close contact and interacts with the European Commission' (EC) services dealing with transport research (DG RDI, MOVE and CONNECT). In particular ECTRI issues position papers to input Framework- and Work-Programmes (FP6, FP7 & H2020) and to respond to relevant consultations of the EC in the field of transport. For the complete list, please visit the ECTRI website.

A strong and effective mechanism for obtaining common positions in today's most pressing transport issues as well as achieving scientifically sound and well documented solutions to transport problems are the ECTRI Thematic Groups (TG) and Task Force (TF), which are linked to the core scientific competences of ECTRI Members. At present ECTRI has six TGs in the areas of Mobility, Freight and Logistics, Economics and Policy, Safety, Security and Risk Analysis and Traffic Management; and a TaskForce on European transport research and policy. A leaflet presenting more detailed information on the TGs is available.



Internationally, building on the strong involvement of ECTRI Members with the Transportation Research Board (TRB) of the US National Academies, ECTRI signed

Promoting participation in R&D projects



ECTRI Members are major players and most valued providers of research capacity in transport research programmes at National and European level. ECTRI looks for increasing the number and success rate of its Members' initiated R&D projects. Through effective networking and cooperation within its Thematic Groups, ECTRI has supported the development of several projects by directly helping formation of consortia and proposal preparation and when funded, dissemination of research results.

In fact, ECTRI Members are involved in 58 projects of the first call of Horizon 2020, including 10 on Aviation, 5 on Rail, 8 on Road, 2 on Water, 4 on Urban, 1 on Logistics, 3 on ITS, 4 on Infrastructure, 2 on Socio-economics and 19 on Green Vehicles. ECTRI Members are also currently involved in 6 COST running actions.

Over the past 10 years, ECTRI Members were involved in 172 projects of the 7th Framework Programme (FP) and Competitiveness and Innovation Framework Programme (CIP), in 113 projects of the 6th FP, and in 10 COST actions.

ECTRI, as an association, also has taken up the leadership of five horizontal projects of high strategic character e.g. NET-TRACK, EURFORUM, DETRA, EUTRAIN and more recently SETRIS; all were funded by the EU FP.

Servicing its Members through information, exchange and representation

Benefiting from information, knowledge exchange and representation is an essential service for the Members.

A communication plan defines the means and content of the information dissemination according to the Members' needs. In particular, ECTRI provides its Members with advanced and targeted information on ongoing and/or planned developments in e.g. European transport research and policy, calls for proposals and tenders, Publications, Conferences and events, and news from other EU transport and research stakeholders.

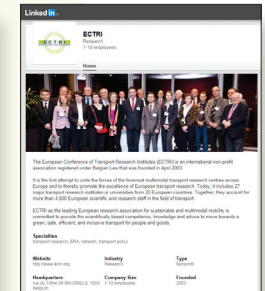
Moreover, ECTRI promotes the activities and interests of its Members through its website and social media (LinkedIn). ECTRI also actively represents them at selected events and conferences in view to have its voice more convincingly heard in support of high quality and effective transport research in Europe.

Info from Brussels
February 2016

How often like to be an administrator with the ECTRI Community of Places and the other members of the European Transport Research Infrastructure Forum and other the website

Issue 2016 - page 1 of 26

Category	Count
1) ECTRI Board Meeting	4
2) Next ECTRI Assembly of Members	4
3) ECTRI website	4
4) ECTRI website	4
5) ECTRI website	4
6) ECTRI website	4
7) ECTRI at ITF Consultation Day with International Organizations 2014	10
8) ECTRI website	11
9) ECTRI website	11
10) ECTRI website	11
11) ECTRI website	11
12) ECTRI website	11
13) ECTRI website	11
14) ECTRI website	11
15) ECTRI website	11
16) ECTRI website	11
17) ECTRI website	11
18) ECTRI website	11
19) ECTRI website	11
20) ECTRI website	11
21) ECTRI website	11
22) ECTRI website	11
23) ECTRI website	11
24) ECTRI website	11
25) ECTRI website	11
26) ECTRI website	11
27) ECTRI website	11
28) ECTRI website	11
29) ECTRI website	11
30) ECTRI website	11
31) ECTRI website	11
32) ECTRI website	11
33) ECTRI website	11
34) ECTRI website	11
35) ECTRI website	11
36) ECTRI website	11
37) ECTRI website	11
38) ECTRI website	11
39) ECTRI website	11
40) ECTRI website	11
41) ECTRI website	11
42) ECTRI website	11
43) ECTRI website	11
44) ECTRI website	11
45) ECTRI website	11
46) ECTRI website	11
47) ECTRI website	11
48) ECTRI website	11
49) ECTRI website	11
50) ECTRI website	11
51) ECTRI website	11
52) ECTRI website	11
53) ECTRI website	11
54) ECTRI website	11
55) ECTRI website	11
56) ECTRI website	11
57) ECTRI website	11
58) ECTRI website	11
59) ECTRI website	11
60) ECTRI website	11
61) ECTRI website	11
62) ECTRI website	11
63) ECTRI website	11
64) ECTRI website	11
65) ECTRI website	11
66) ECTRI website	11
67) ECTRI website	11
68) ECTRI website	11
69) ECTRI website	11
70) ECTRI website	11
71) ECTRI website	11
72) ECTRI website	11
73) ECTRI website	11
74) ECTRI website	11
75) ECTRI website	11
76) ECTRI website	11
77) ECTRI website	11
78) ECTRI website	11
79) ECTRI website	11
80) ECTRI website	11
81) ECTRI website	11
82) ECTRI website	11
83) ECTRI website	11
84) ECTRI website	11
85) ECTRI website	11
86) ECTRI website	11
87) ECTRI website	11
88) ECTRI website	11
89) ECTRI website	11
90) ECTRI website	11
91) ECTRI website	11
92) ECTRI website	11
93) ECTRI website	11
94) ECTRI website	11
95) ECTRI website	11
96) ECTRI website	11
97) ECTRI website	11
98) ECTRI website	11
99) ECTRI website	11
100) ECTRI website	11



Fostering education and training

Attracting and preparing a new generation of researchers and professionals to deal with the challenges of an increasingly complex transport system are among the main priorities of ECTRI.

ECTRI initiated, in cooperation with FEHRL and FERSI, the bi-annual Young Researchers Seminar (YRS). This seminar offers the opportunity to a network of young transport researchers from ECTRI, FEHRL and FERSI Members and from research organisations across the US to gather and interact for 3 days. During the Seminar, young researchers are able to improve their presentation skills in written and oral scientific communication by tutorial means. Their tutoring is done by senior researchers who themselves are acting in a truly international scientific culture. For each edition, a dedicated Task Force (TF Young Researchers Seminar) is established to perform the knowledge transfer and support the Seminar host institution.

Seven Seminars have taken place since 2003 in different European locations. The next one will be held in Berlin from May 16-18, 2017.



TRB Annual Meetings; OECD International Transport Forum (ITF); Road Safety on Five Continents (RS5C); and World Conference on Transport Research (WCTR).

Joining research capabilities and infrastructures

Benefiting from being an association and incorporating the foremost European transport research institutes, the definition of common research priorities and structures for joining Members' research capabilities and infrastructures has high relevance for ECTRI. In this regard, ECTRI seeks to provide a full and up-to-dated information of the Members' capabilities and infrastructures, a common framework for using them as well as a culture of mutual understanding and willingness to join capabilities and infrastructures.

Disseminating research results

ECTRI considers the dissemination of scientific knowledge and research results as essential.



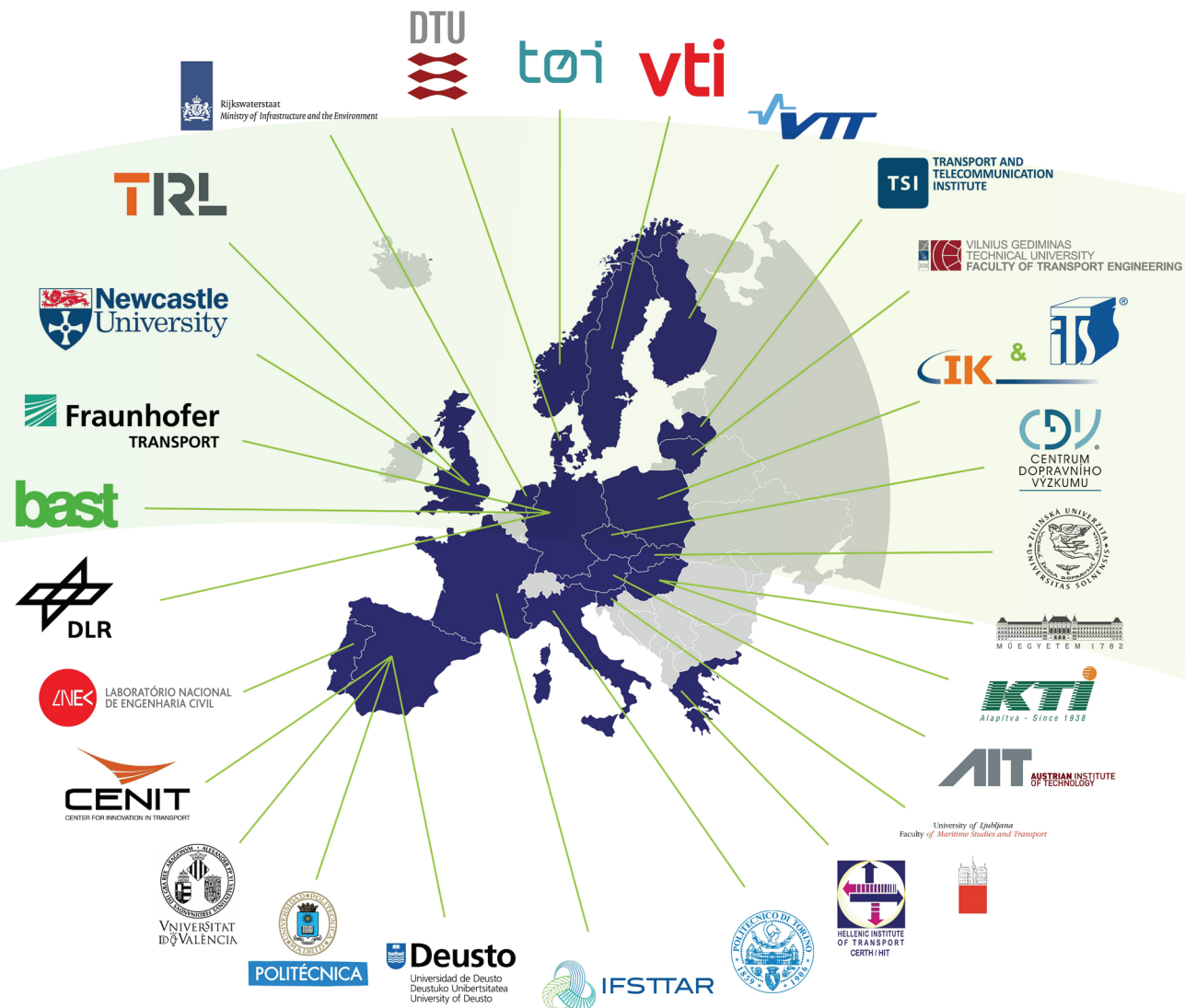
To support such dissemination, ECTRI has created the European Transport Research Review (ETRR), an Open Access journal published by Springer and indexed by Thomson Reuters. The ETRR is a multidisciplinary scientific journal dedicated to transport and covering all fields of transport. Its aims are the publication of high quality scientific papers, dissemination of new ideas and developments, publication of information papers, books and conference reviews. For submitting articles or for more information: <http://link.springer.com/journal/12544>.

To assure optimal dissemination of research results, ECTRI also actively supports in various forms (e.g. participation in Committees, reviewing, chairs, speakers, organisation of sessions or dissemination on the Conference) the major International scientific Conferences i.e. European Transport Conference (ETC); Transport Research Arena (TRA);

ECTRI Members – Fields of Expertise

	AIT	BASt	BME	CDV	CENIT	DLR	DEUSTO	DTU	FhG-FW	HIT	IFSTTAR	ITS & IK	KTI	LINEC	POLITO	RWS-WWL	TØI	TRL	TTI	UL	UNEW	UNIZA	UPM	UVEG	VGU TIF	VTI	VTT
Freight Transport & Logistics																											
Mobility & Travel Behaviour																											
Modeling																											
Passenger Transport																											
Safety & Security																											
Transport & Economics																											
Transport & Ergonomics																											
Transport & Telematics																											
Transport & Environment																											
Transport Infrastructure																											
Transport System Management																											
Vehicle Technology																											

Blue / green coloured blocks indicate involvement or expertise in that area for the Member



Membership

ECTRI Members are research establishments with head offices in Europe, full legal personality and tasked with considerable activities of public interest in the field of transport research (and in particular in multimodal issues).

Interested in becoming a Member? Download our brochure on key information and conditions and the application form from the website.



Contact details:

ECTRI Office :
 Rue du Trône 98 • 1050 Brussels • Belgium
 info@ectri.org
 +32 (0)2 500 56 88
www.ectri.org