

ECTRI – An Overview

November 2008

ECTRI Origin

- Established in 2003 as a non-profit association
- Objective: to promote integrated surface transport research and development in Europe
- First attempt to:
 - Unite the forces of the **foremost multimodal transport research centres** across Europe
 - thereby **promote the excellence of European transport research**

Vision

“An efficient, integral European transport system that provides completely safe, secure and sustainable mobility for people and goods”



Soria Moria castle, by T. Kittelsen. Travelling towards a far away vision.

Mission

To provide the scientifically based competence, knowledge, and advice necessary to move towards its vision

To this purpose, ECTRI

- endeavours to **provide practically applicable answers** to questions of **policy formulation**
- brings together the **foremost, policy relevant, interdisciplinary scientific competence** available in Europe, capable of carrying out state-of-the-art primary and applied research in transport
- strives to continually **improve the quality and overall efficiency of European transport research**
- continually **looks for innovative solutions** to the present and future challenges in the field of transport
- endeavours to **provide European transport research institutes with the conditions necessary for the development, maintenance and exploitation of their scientific excellence**

Short and Long Term Goals: ECTRI aims to...

- be a closely knit and **institutionalised network of competence centres** within European transport planning and research
- be the foremost **representative of European transport research institutes** and the only **important organisation with a cross-cutting, mode-neutral perspective** on transport planning and policy
- include the **foremost centres of excellence in transport research** and integrate organisations from the new member states, acceding and Western Balkan countries
- be the **preferred scientific partner of dialogue** on transport planning and policy **to the European Commission**
- to develop and support **leading and widely recognised channels of dissemination of transport research results** (like the European Transport Research Review – ETRR),
- encourage its members to be the most **active and successful contributors to the EC framework programs**
- be perceived globally as the **unique, legitimate representative of the European transport research community**

Member Institutions

CDV	Transport Research Centre	www.cdv.cz
CEDEX	Center for Studies and Experimentation of Public Works	www.cedex.es
DLR	German Aerospace Center	www.dlr.de
DTU Transport	Danish Technical University - Danish Transport Research Institute	www.dtu.dk
DVS	Rijkswaterstaat Centre for Transport and Navigation	www.rws.nl
FHG-FVV	Fraunhofer Transport Alliance	www.verkehr.fraunhofer.de
HIT	Hellenic Institute of Transport	www.hit.certh.gr
INRETS	French National Institute For Transport And Safety Research	www.inrets.fr
ITS & CNTK	Motor Transport Institute & Railway Scientific and Technical Centre	www.its.home.pl www.cntk.pl
KTI	Institute for Transport Sciences	www.kti.hu
POLITO	Politecnico di Torino, Department of Hydraulics, Transports & Civil Infrastructures	www.polito.it
TNO	Netherlands Organisation for applied Scientific Research	www.tno.nl
TOI	Institute of Transport Economics	www.toi.no
TRL	Transport Research Laboratory Limited	www.trl.co.uk
TTEF	University of Belgrade, Faculty of Transport and Traffic Engineering	www.sf.bg.ac.yu
UPM	Polytechnic University of Madrid – Higher Technical School of Civil Engineering	www.caminos.upm.es
VGTU-TMI	Vilnius Gediminas Technical University - Transport Research Institute	www.vtu.lt/english/vgtu/
VTI	Swedish National Road and Transport Research Institute	www.vti.se
VTT	Technical Research Centre of Finland	www.vtt.fi
VÚD	Transport Research Institute	www.vud.sk

Traffic Sector Activities



	CDV	CEDEX	DLR	DTU Transp.	DVS	FhG-FVW	HIT	INRETS	ITS & CNTK	KTI	POLITO	TNO	TØI	TRL	TTEF	UPM	VTI	VTT	VG TU TMI	VÚD	
Road Transport																					
Rail Transport																					
Waterborne Transport																					
Air Transport																					
Cross Cutting Work																					

– marginal

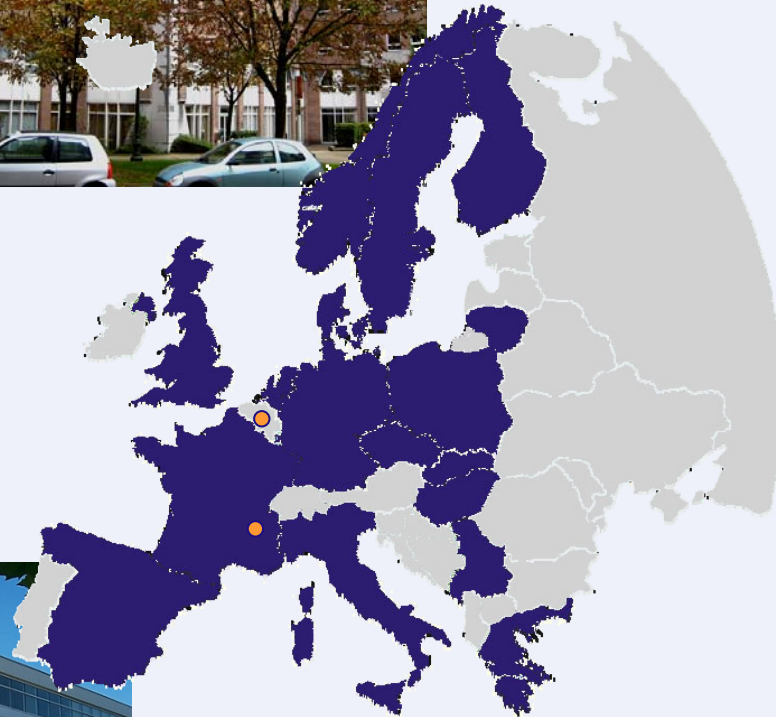
ECTRI Fields of Expertise

	CDV	CEDEX	DLR	DTU Transp.	DVS	FhG-FVW	HIT	INRETS	ITS & CNTK	KTI	POLITO	TNO	TØI	TRL	TTEF	UPM	VTI	VTT	VG TU TMI	VÚD
Freight Transport & Logistics																				
Mobility & Travel Behaviour																				
Modeling																				
Passenger Transport																				
Safety & Security																				
Transport & Economics																				
Transport & Ergonomics																				
Transport & Telematics																				
Transport & Environment																				
Transport Infrastructure																				
Transport System Management																				
Vehicle Technology																				

Current ECTRI Locations



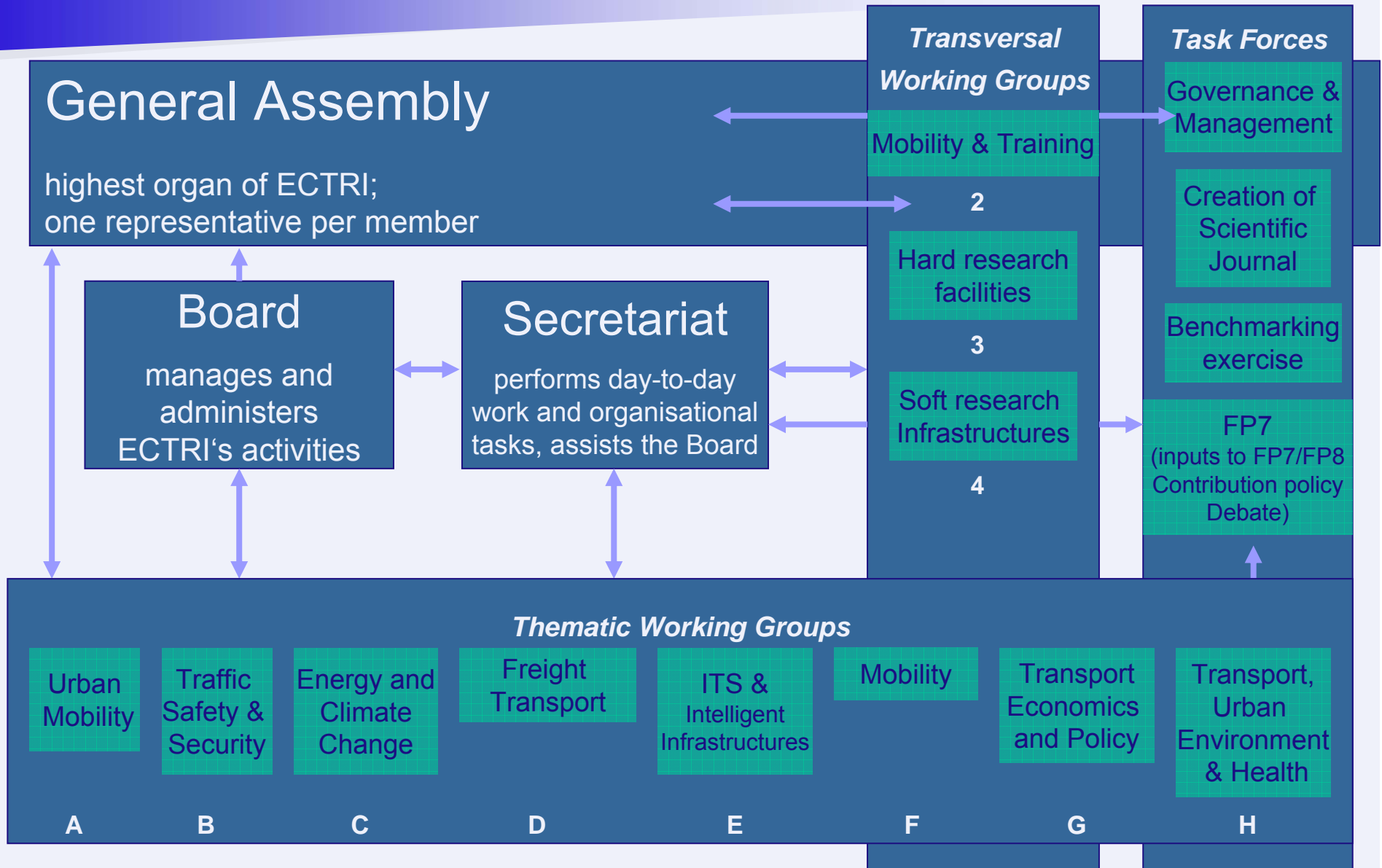
Secretary General and new offices: Brussels, Belgium



Headquarters and permanent staff: Lyon, France



ECTRI's Structure



ECTRI Board 2007-2009



President:

Guy Bourgeois – INRETS, France

Vice-President:

Josef Mikulik – CDV, Czech Republic

Secretary:

Dietmar Wurzel – DLR, Germany

Treasurer:

Cristina Pronello – POLITO, Italy

Members:

Joris AI – DVS, The Netherlands

Lasse Fridstrøm – TØI, Norway

Niels Buus Kristensen – DTU Transport, Denmark

Transversal Working Groups

■ Mobility and training

Promotion of human resources and mobility & Marie Curie actions

- Together with FERSI and FEHRL, ECTRI as of today has organised three Young Researchers Seminars to help further their education and careers
- will participate in the YEAR 2010 contest (TRA)

■ Soft research infrastructures

Common ECTRI transport research “soft” infrastructures initiative

- development and implementation of web-based database on libraries, datasets, databases, and networks
- Objective: support interaction between researchers of all member institutes regarding exchange of knowledge and joint development of research projects
- ECTRI-only web-access: <https://ectri.cdv.cz/index.php>

Database
Institutions
Contact Persons
Research Activities
Datasets
Libraries

■ Hard research facilities

Common ECTRI transport research facilities initiative

WG Electronic Journal

■ European Transport Research Review (ETRR)

- an open access journal; wide availability to all researchers with a minimum of constraints and costs
- provides focus on issues of special interest to European transport research, its funding bodies and supervising organisations
- first issue end 2008-early 2009
- published by  Springer Verlag through contract with ECTRI
the language of science
- Journal website: www.springer.com/12544
- For authors: online manuscript submission, review and tracking: www.editormanager.com/etrr



Thematic Working Groups

- Urban mobility (*lead: INRETS*)
- Traffic safety & security (*DVS*)
- Energy and climate change (*DLR*)
- Freight transport (*DLR*)
- Intelligent transport systems and infrastructures (*INRETS*)
- Mobility (socio-economic, demographic, policy aspects) (*DTU-Tr.*)
- Transport economics and policy (*INRETS*)
- Transport, Urban Environment, and Health (*TOI*)

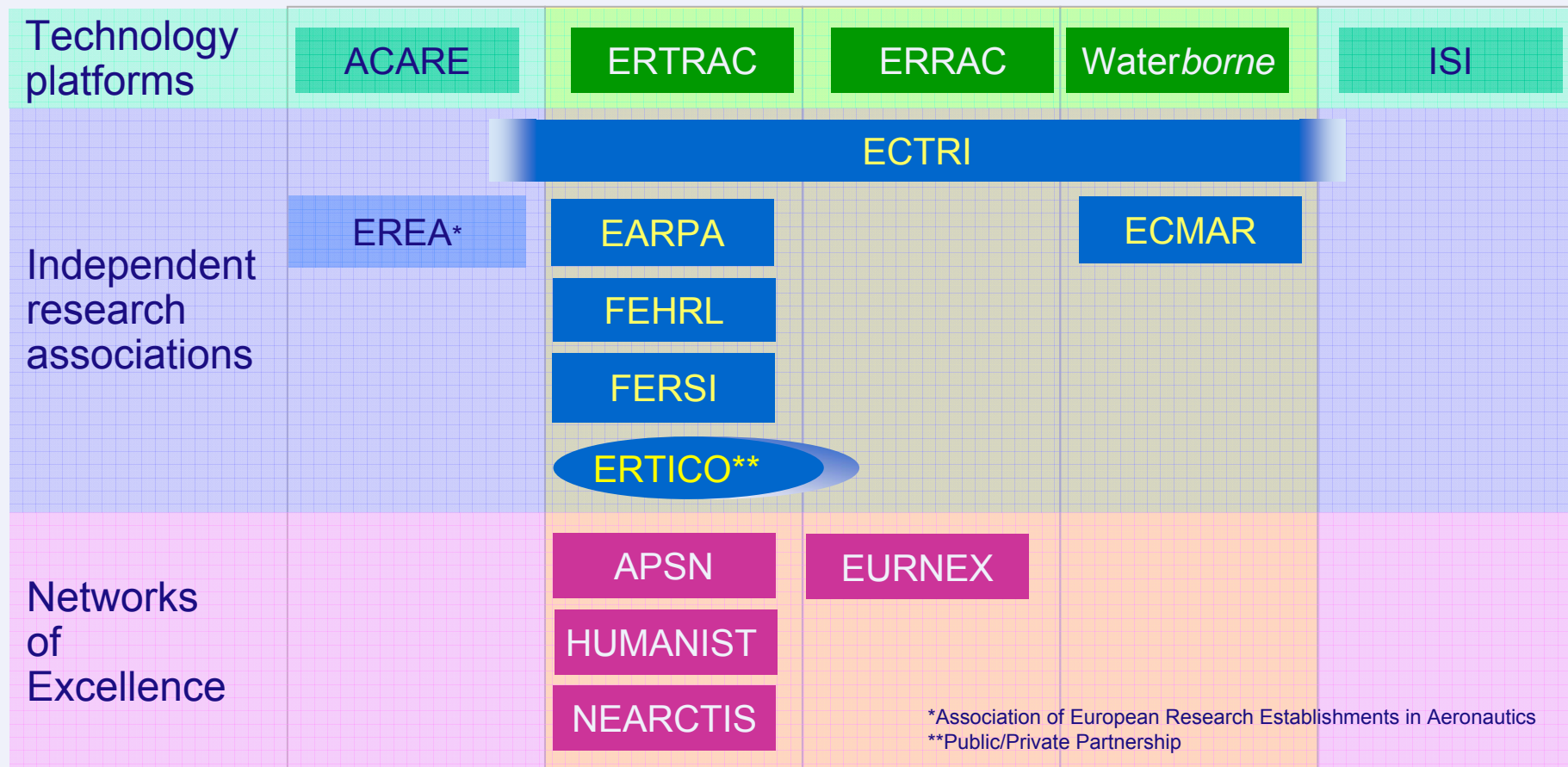
Purpose

- increase ECTRI's competence in science, research and development
- promote interaction between researchers of member institutions
- enhance international transport research cooperation
- support establishing of consortia

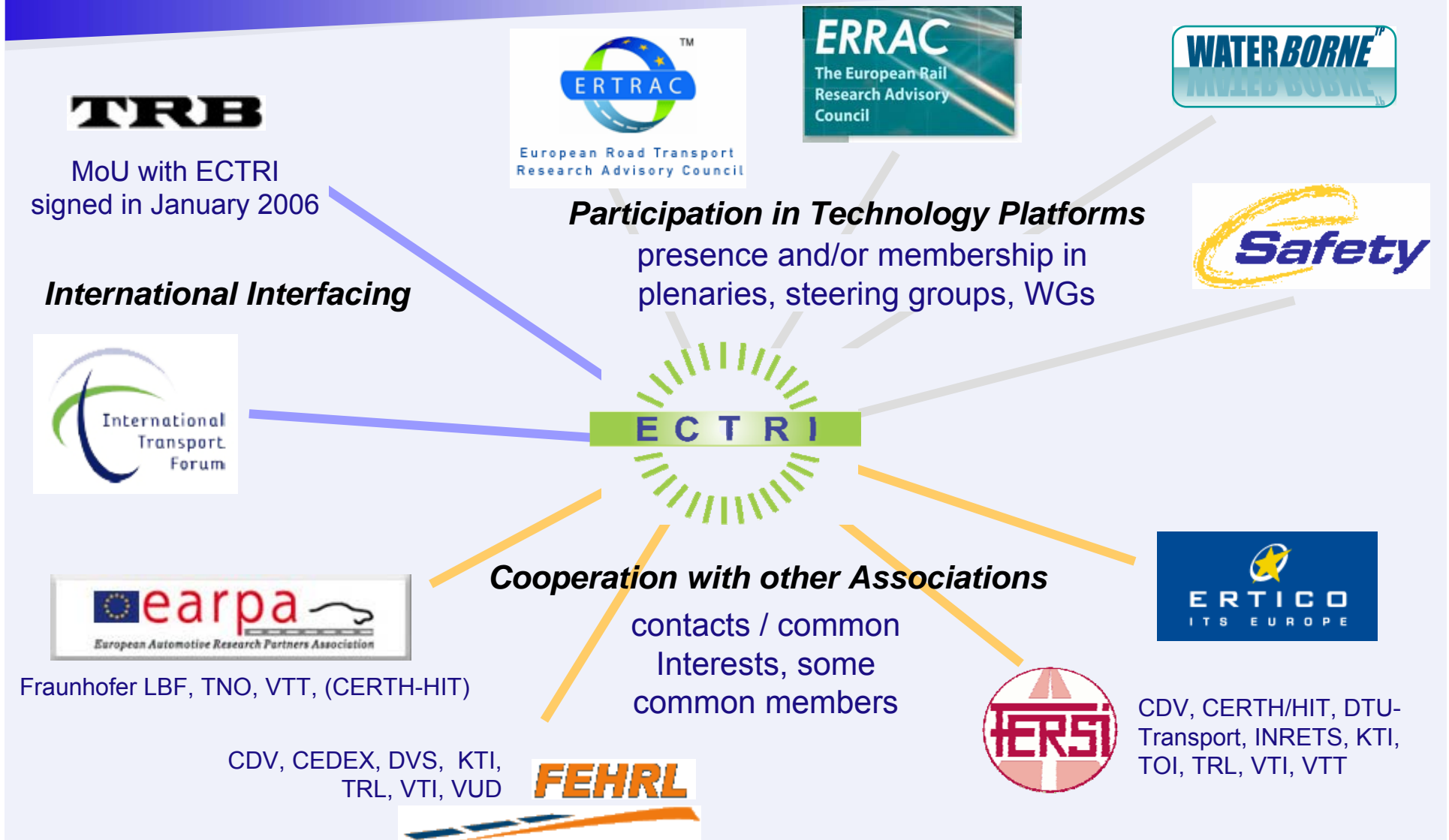


ECTRI in the Transport Research Arena

Major Technology Platforms – Associations – Networks of Excellence



Interaction with relevant European and International Organisations



Members participation in European Projects

■ 6th Framework Program

113 transport research projects, among them

- 6 Networks of Excellence: HUMANIST, EURNEX and APSN
- 35 Integrated Projects, 28 Coordination and Support Actions,
- as well as 41 Specific Targeted Research Projects,
- and 3 Marie Curie actions (Transfer of knowledge)

■ 7th FP (retained for negotiation)

Nearly 84 transport research projects for the first and second call, among them

- 1 Network of Excellence: NEARCTIS
- 60 Collaborative Projects
- as well as 23 Coordination and Support Actions

■ COST

European Cooperation in the Field of Scientific and Technical Research

– Intergovernmental Network

5 running actions in the 'Transport and Urban Development' domain

various thematic areas / all surface transport modes: rail, road, maritime, air, multimodal

In FP6, ECTRI

was the coordinator of

NET-TRACK - www.ectri.org/nettrack



Exchange of experience and transfer of knowledge in research management and soft research infrastructures issues between scientific communities active in transport research in the member / new member states, accession countries, and Western Balkan countries

was a partner in

EURFORUM - www.eurforum.net



Research priorities for the urban mobility sector and creating a forum of stakeholders on urban mobility research; recommendations for the coordination of European research on urban mobility issues; Strategic Research Agenda issued

ECTRI and European Policies

(including FP7)

Advice / recommendations based on societal needs in surface transport



Inputs / contributions

- FP 7 updates / working programs
- consultations
- EC papers (green / white papers), etc



Benefits:

"Economies of scale" of a collaborating European research community

Position reflected in European Policies

Members find areas of interest covered in calls



Other Activities (1)

■ International interfacing

- TRB (US Transportation Research Board)
MoU signed in January 2006 in Washington, D.C
- OECD/ITF (International Transport Forum - A Worldwide Platform for Transport Ministers, Industry and Civil Society)

■ Participation in conferences

- International
 - TRB Annual Meeting
 - World Congress on Intelligent Transport Systems
 - World Conference on Transport Research
 - World Congress on Railway Research
 - Road Safety on Four Continents
- European
 - Transport Research Arena
 - European Transport Conference
 - Intelligent Transport Systems Europe
 - EC conferences

Other activities (2)

Promotion of 'major annual Conference on Transport Research and policies'

- In this view, participation to the INRETS Event, 8-12th December 2008, in Lyon:
 - ⇒ A surface transport research event gathering European institutional networks – ECTRI, EARPA, FEHRL, FERSI – and Networks of Excellence (NoEs) – HUMANIST, EURNEX, ISN (ex APSN), NEARCTIS
 - ⇒ Initiate a European version of the « TRB Summer schools »
 - ⇒ Create networking opportunities (reinforcing and widening): it will be a week to meet and exchange, all actors gathered in one place
 - ECTRI's presence and support:
 - ⇒ General Assembly Meeting of ECTRI, Thematic Working Group meetings and participation to 4 transversal sessions
- ➔ ECTRI's forces gathered to contribute to the discussion on FP7 updates and on the future of European Research Area

Need Further Information – Have Questions?



www.ectri.org

info@ectri.org

or contact

Caroline Alméras, Project officer, caroline.almeras@ectri.org / +33 4 72142322

Dietmar Wurzel, Secretary General: dietmar.wurzel@ectri.org / +32-2-5000-846