



# ECTRI – An Overview

March 2011

# ECTRI Origin

- Established in 2003 as a non-profit association
- Objective: to promote integrated surface transport research and development in Europe
- First attempt to:
  - Unite the forces of the **foremost multimodal transport research centres** across Europe
  - thereby **promote the excellence of European transport research**

# Vision

“An efficient, integral European transport system that provides completely safe, secure and sustainable mobility for people and goods”



*Soria Moria castle, by T. Kittelsen. Travelling towards a far away vision.*

# Mission

To provide the scientifically based competence, knowledge, and advice necessary to move towards its vision

To this purpose, ECTRI

- endeavours to **provide practically applicable answers** to questions of **policy formulation**
- brings together the **foremost, policy relevant, interdisciplinary scientific competence** available in Europe, capable of carrying out state-of-the-art primary and applied research in transport
- strives to continually **improve the quality and overall efficiency of European transport research**
- continually **looks for innovative solutions** to the present and future challenges in the field of transport
- endeavours to **provide European transport research institutes with the conditions** necessary for the **development, maintenance and exploitation of their scientific excellence**

# Short and Long Term Goals: ECTRI aims to...

- be a closely knit and **institutionalised network of competence centres** within European transport planning and research
- be the foremost **representative of European transport research institutes** and the only **important organisation with a cross-cutting, mode-neutral perspective** on transport planning and policy
- include the **foremost centres of excellence in transport research** and integrate organisations from the new member states, acceding and Western Balkan countries
- be the **preferred scientific partner of dialogue** on transport planning and policy to **the European Commission**
- to develop and support **leading and widely recognised channels of dissemination of transport research results** (like the European Transport Research Review – ETRR),
- encourage its members to be the most **active and successful contributors to the EC framework programs**
- be perceived globally as the **unique, legitimate representative of the European transport research community**



# Member Institutions (1/2)

AIT	Austrian Institute of Technology	<a href="http://www.ait.ac.at">www.ait.ac.at</a>
BASt	Federal Highway Research Institute Germany	<a href="http://www.bast.de">www.bast.de</a>
CDV	Transport Research Centre	<a href="http://www.cdv.cz">www.cdv.cz</a>
CEDEX	Center for Studies and Experimentation of Public Works	<a href="http://www.cedex.es">www.cedex.es</a>
CENIT	Centre for Innovation in Transport	<a href="http://www.cenit.es">www.cenit.es</a>
DLR	German Aerospace Center	<a href="http://www.dlr.de">www.dlr.de</a>
DTU Transport	Danish Technical University - Danish Transport Research Institute	<a href="http://www.transport.dtu.dk">www.transport.dtu.dk</a>
DVS	Rijkswaterstaat Centre for Transport and Navigation	<a href="http://www.rws.nl">www.rws.nl</a>
FHG-FVV	Fraunhofer Transport Alliance	<a href="http://www.verkehr.fraunhofer.de">www.verkehr.fraunhofer.de</a>
HIT	Hellenic Institute of Transport	<a href="http://www.certh.gr/hit.en.aspx">www.certh.gr/hit.en.aspx</a>
IFSTTAR	French institute of science and technology for transport, development and networks	<a href="http://www.ifsttar.fr">www.ifsttar.fr</a>
ITS & IK	Motor Transport Institute & Railway Institute	<a href="http://www.its.home.pl">www.its.home.pl</a> <a href="http://www.ik.pl">www.ik.pl</a>
KTI	Institute for Transport Sciences	<a href="http://www.kti.hu">www.kti.hu</a>
LET	Transport Economics Laboratory	<a href="http://www.let.fr">www.let.fr</a>

# Member Institutions (2/2)

LNEC	National Laboratory for Civil Engineering Portugal	<a href="http://www.lnec.pt">www.lnec.pt</a>
POLITO	Politecnico di Torino, Department of Hydraulics, Transports & Civil Infrastructures	<a href="http://www.polito.it">www.polito.it</a>
SWOV	Dutch National Road Safety Research Institute	<a href="http://www.swov.nl">www.swov.nl</a>
TTI	Transport and Telecommunication Institute Latvia	<a href="http://www.tsi.lv">www.tsi.lv</a>
TNO	Netherlands Organisation for applied Scientific Research	<a href="http://www.tno.nl">www.tno.nl</a>
TOI	Institute of Transport Economics	<a href="http://www.toi.no">www.toi.no</a>
TRL	Transport Research Laboratory Limited	<a href="http://www.trl.co.uk">www.trl.co.uk</a>
TTEF	University of Belgrade, Faculty of Transport and Traffic Engineering	<a href="http://www.sf.bg.ac.yu">www.sf.bg.ac.yu</a>
UPM	Polytechnic University of Madrid – Higher Technical School of Civil Engineering	<a href="http://www.caminos.upm.es">www.caminos.upm.es</a>
UV	University of Valencia	<a href="http://www.uv.es">www.uv.es</a>
VGTU-TMI	Vilnius Gediminas Technical University - Transport Research Institute	<a href="http://www.vtu.lt/english/vgtu">www.vtu.lt/english/vgtu</a>
VTI	Swedish National Road and Transport Research Institute	<a href="http://www.vti.se">www.vti.se</a>
VTT	Technical Research Centre of Finland	<a href="http://www.vtt.fi">www.vtt.fi</a>
VÚD	Transport Research Institute	<a href="http://www.vud.sk">www.vud.sk</a>

# Transport mode coverage



	AIT	BAST	CDV	CEDEX	CENIT	DLR	DTU transp.	DVS	Fhg-FVV	HIT	IFSTAR	ITS & IK	KTI	LET	LNEC	POLITO	SWOV	TNO	TØI	TRL	TTEF	TTI	UPM	UV	VTI	VTT	VGTU TMI	VÜD
Road Transport																												
Rail Transport																												*
Waterborne Transport															*	*												
Air Transport					*						*				*				*						*			
Cross Cutting Work																												

# Fields of Expertise

	AIT	BASi	CDV	CEDEX	CENIT	DLR	DTU transp.	DVS	Fhg-FVV	HIT	IFSTAR	ITS & IK	KTI	LET	LINEC	POLITO	SWOV	TNO	TØI	TRL	TTEF	TTI	UPM	UV	VTI	VTT	VG TU TMI	VÜD
Freight Transport & Logistics																												
Mobility & Travel Behaviour																												
Modeling																												
Passenger Transport																												
Safety & Security																												
Transport & Economics																												
Transport & Ergonomics																												
Transport & Telematics																												
Transport & Environment																												
Transport Infrastructure																												
Transport System Management																												
Vehicle Technology																												

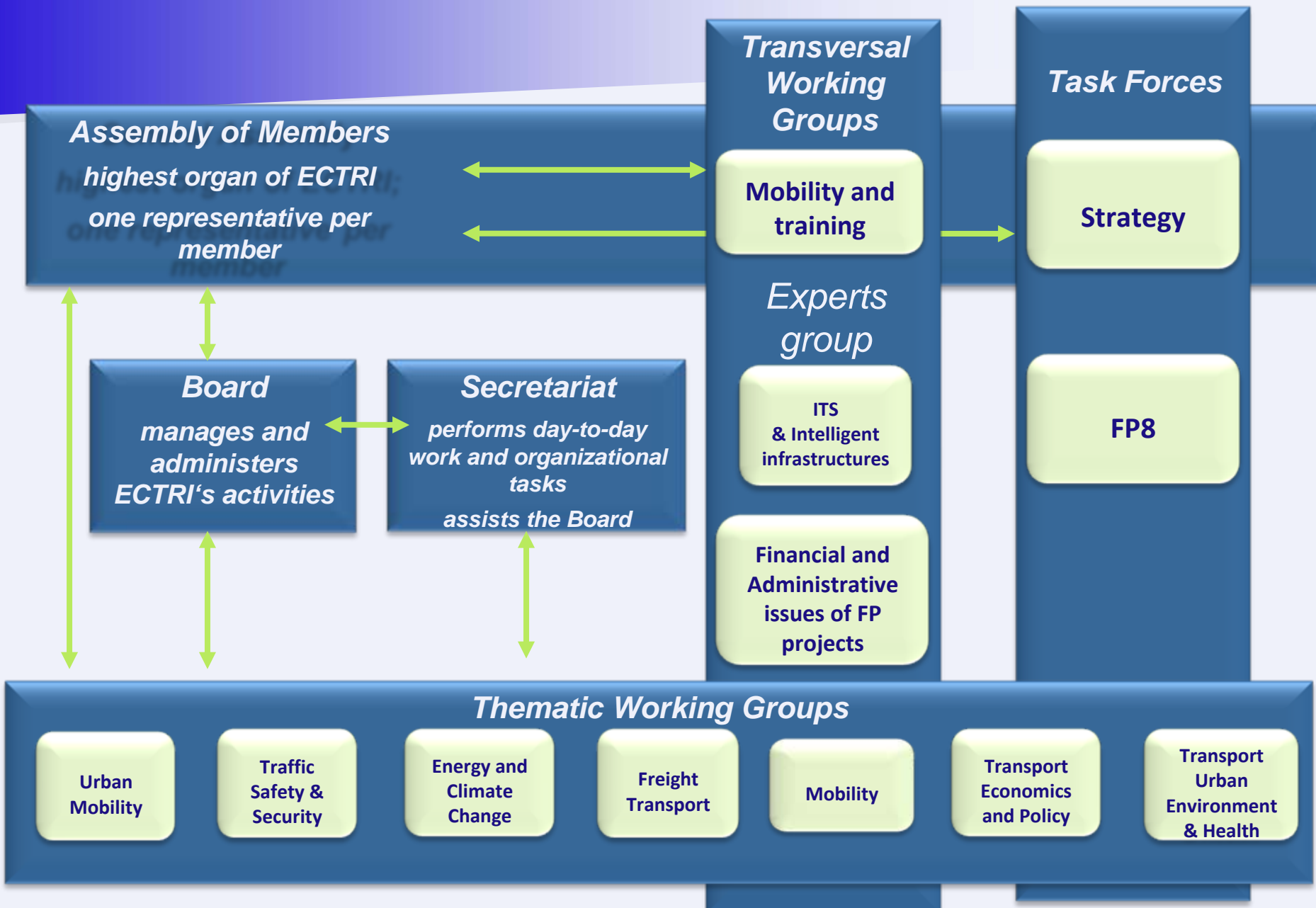
# Current ECTRI Location



**Offices and permanent staff:**  
**Brussels, Belgium**  
Rue du Trône 98  
Metro: Trône

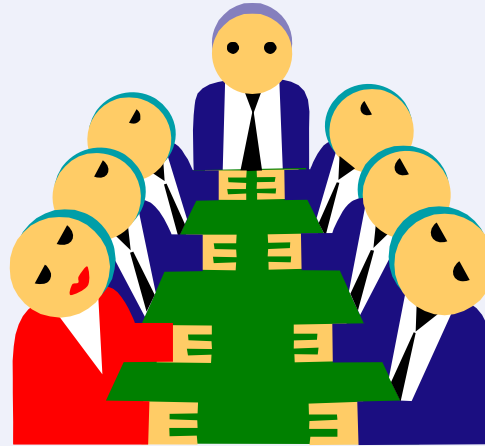


# ECTRI Structure



# ECTRI Board 2011-2013

(as from 27 Jan. 2011)



*President:* **Christian Piehler** – DLR, Germany  
*Vice-President:* **Neil Pauley** – TRL, United Kingdom  
*Treasurer:* **Cristina Pronello** – LET, France  
*Members:* **Heikki Kanner** – VTT, Finland  
**Franz Pirker** – AIT, Austria  
**Leif Thorson** – CENIT, Spain  
**Witold Olpinski** – IK, Poland

# Transversal Working Groups

## ■ Mobility and training

Promotion of human resources and mobility & Marie Curie actions

- Contribution to FP7/FP8 on Mobility and Training and elaboration of a road map for the development of a European PhD and research management school in Transport (partly linked to DETRA FP7 project)
- Together with FERSI and FEHRL, ECTRI organisation of Young Researchers Seminars to help further their education and careers; last YRS took place on 3-5 June 2009, Torino, Italy; next YRS from **8 -10 June 2011 in Copenhagen, Denmark**
- Participated in the YEAR 2010 contest (in the frame of TRA) – Young researchers competition

# Thematic Working Groups

- Urban mobility (*lead: IFSTTAR*)
- Traffic safety & security (*DVS*)
- Energy and climate change (*IFSTTAR*)
- Freight transport (*DLR*)
- Mobility (socio-economic, demographic, policy aspects) (*IFSTTAR*)
- Transport economics and policy (*IFSTTAR*)
- Transport, Urban Environment, and Health (*IFSTTAR*)

## Purpose

- Increase ECTRI's competence in science, research and development
- Promote interaction between researchers of member institutions
- Enhance international transport research cooperation
- Support establishing of consortia



# TWG : Urban Mobility

■ **Composition:** 40 experts from 23 Institutes (oldest, created in 2004)

## ■ Objectives

- Preparation of a strategic research agenda (SRA) on urban mobility & definition of a working program in this field, establish an overall scenario on Urban Mobility 'vision 2020'
- Define a working programme in this area for actions at short, medium and long terms
- Proposal of common reflections about research needs in urban mobility to European, national and regional institutions

## ■ Main achievements

- Urban Mobility Initiative "URBAMOVE" (SRA), May 2005
- Contribution to the preparation of the EC green paper, April 2007
- Publication of EURFORUM SRA, Nov. 2007
- Position paper on EC Green paper, March 2008
- Input to FP7 Workprogramme updates, December 2008
- Brno declaration in at the conference on "Urban mobility in the light of Lisbon strategy", May 2009
- Contribution to ERTRAC SRA and Road Maps Update, 2010
- Participation in Urban ITS platform
- Updated URBAMOVE SRA, December 2010
- EU funded projects: **EURFORUM, SMART-WAY, CLOSER, OPTIC**



# TWG : Traffic Safety and Security

■ **Composition:** 36 experts from 21 Institutes

■ **Objectives**

- Identify target groups and working structures to ensure safety research and practices based on high scientific quality, establish a Strategic Research Agenda
- Approach, e.g. APSN, EURNEX, HUMANIST networks of excellence, common work with FERSI
- Become information resource for policy makers at European and national level
- Establish influence in Europe equivalent to TRB (Safety) in North America

■ **Main achievements**

- Input to FP7 workprogramme updates, December 2008
- Position paper “The sustainable safety approach to Road Transport and Mobility” together with FERSI, January 2009
- Contribution to DG TREN Action plan on Road Safety, 2009
- Strategic Research Agenda on the theme “Traffic safety and Security”, 2009
- Contribution to the ERTRAC SRA Update, 2010
- Participation to FP7 proposal: SafeROWOSO
- Collaboration with FERSI, ERTRAC, EARPA



# TWG : Energy and Climate Change

- **Composition:** 26 experts from 18 Institutes
- **Objectives**
  - Development of TWG matrix of experience and identification of knowledge gaps (topics subject to a future ranking process), establish a Strategic Research Agenda
  - Development of document/resource database (server-based)
  - Focus Research on mission measurements, technology assessment, soft measures, policy assessment, tool development, behaviour
  - Identification of areas that have been subject to research
  - Identification of knowledge gaps to allow proposals at a specific research agenda
  - Preparation of FP7 proposals
- **Main achievements**
  - Input to TRB Climate Change event, 2008
  - Input to FP7 workprogramme updates, December 2008
  - Elaboration of draft SRA and knowledge map, 2009
  - Contributions to the ERTRAC SRA Update, 2010



# TWG : Freight Transport

- Composition: 28 experts from 15 Institutes
- Objectives
  - Answering to EC requests related to freight transport issues
  - Producing a strategic paper for freight transport (long run)
  - Influencing the EC framework program and policy issues (at a later stage)
  - Represent ECTRI in freight transport related activities and bodies and present its position
  - Producing successful FP7 proposals
- Main achievements
  - Input to FP7 workprogramme updates, December 2008
  - Participation in international events: CAPOEIRA project final workshop & International Transport Forum, 2008
  - Elaboration of SRA, 2009
  - Participation in FP7 proposals: CO2 FACTS (2008), **COFRET** (2011)



# TWG : Mobility

(Socio-economic, demographic i.e. elderly & disabled people, policy aspects)

- Composition: 22 experts from 15 Institutes
- Research scope
  - Better understanding of mobility behaviour: main interest is to understand underlying factors and determinants affecting
  - Influencing mobility behaviour: basic question is how sustainable mobility behaviour can be promoted
- Objectives
  - Identification of research gaps in above mentioned fields
  - Formulation of strategic research topics on European level
  - Developing a strategic research agenda
  - Promoting FP7 consortia
- Main achievements
  - Matrix of competencies
  - Position paper, early 2008 – updated end 2009
  - Contributions to ERTRAC SRA, August 2010
  - Inputs to FP7 Workprogramme updates, December 2008
  - Project developments: TRANSCON, SOBER, **SMART-WAY**, **SHANTI**, SOSTRA, U-TOUCH



# TWG : Transport Economics & Policy

- Composition: 43 experts from 24 Institutes

- Research scope

- Economic evaluation (demand and supply estimation, evaluation of projects, valuation of non-market goods, ex ante and ex post evaluation...)
- Regulation and financing (pricing and taxation, financing, creation of competitive market transport policies, project & policy, PPP)
- Transport policy analysis (policy design and implementation, level of decision and governance, public acceptability)

- Objectives

- Define research programs and promote scientific collaborations in above fields
- Preparation of FP7 proposals
- Others scientific cooperation (joint publications (ETRR, others), Knowledge management)

- Main achievements

- Matrix of competencies
- Inputs to FP7 Workprogramme updates, December 2008
- Position paper (SRA), December 2009
- Exchanges of scientific knowledge
- Contributions to ERTRAC SRA, August 2010
- Projects developments: **CLOSER**, **IMAGINe**, **TRANSIMPACT**



# TWG : Transport, Urban Environment, and Health

- Composition: 24 experts from 16 Institutes
- Objectives
  - Bringing together ECTRI researchers working within the field of noise and noise related quality of life and health issues
  - Providing a platform for further areas of cooperation
  - Group research activities focused on transport related emissions and their impact on welfare and health
  - Establishing and sharing common knowledge resources
  - Establishing and providing access to common ECTRI toolkits, and methodologies
  - Submitting proposals for FP7 calls
- Main achievements
  - Matrix of competencies
  - Contributions to ERTRAC SRA, August 2010
  - FP7 project participation: **ENNAH, COSMA**

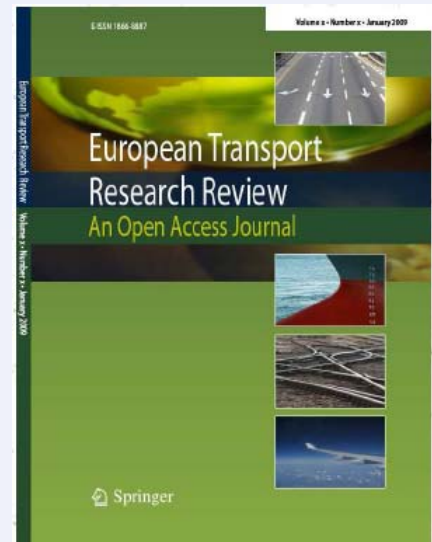


# Experts Group on Intelligent Transport Systems & Intelligent Infrastructures

- Composition: 31 experts from 19 institutes
- Objectives
  - Providing a platform for further cooperation
  - Further exploring possible collaboration with ERTICO
- Main achievements
  - Inputs to EU ITS action plan, to ERTRAC road-maps and eSafety recommendations
  - Interaction with WCTR SIG ITS and ITS Congress
  - Participation in Urban ITS platform



# Electronic Journal

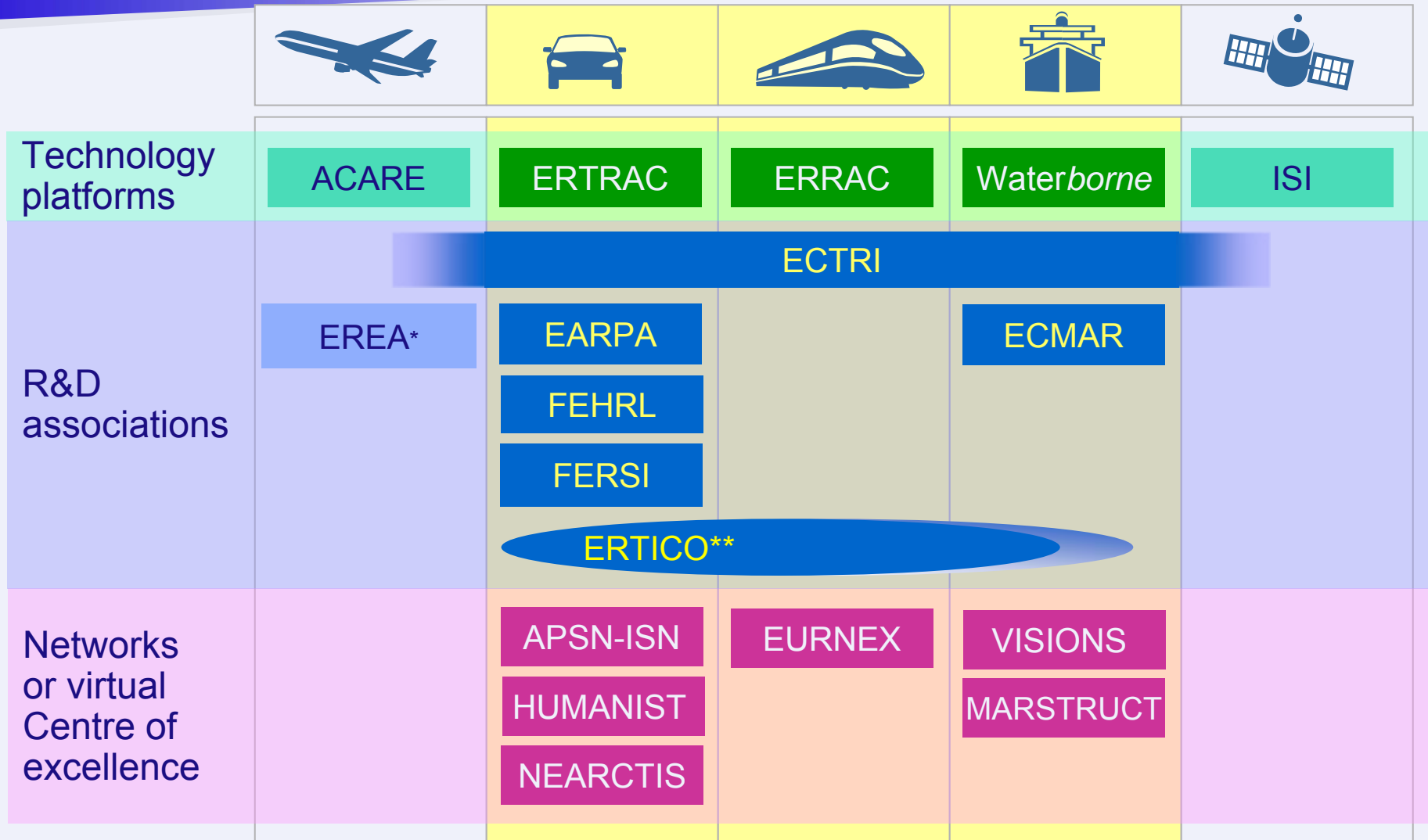


## ■ European Transport Research Review (ETRR)

- an open access journal; wide availability to all researchers with a minimum of constraints and costs
- provides focus on issues of special interest to European transport research, its funding bodies and supervising organisations
- First 2 Volumes (4 issues both) in 2009 and 2010
- published by  Springer Verlag through contract with ECTRI  
the language of science
- Journal website:  
<http://www.springer.com/engineering/mechanical+eng/journal/12544>
- For authors: online manuscript submission,  
review and tracking: <http://www.editorialmanager.com/etrr/>

# ECTRI in the Transport Research Area

Major Technology Platforms – Associations – Networks of Excellence



\*Association of European Research Establishments in Aeronautics

\*\*Public/Private Partnership

Visionary concepts for vessels and floating structures  
Network of excellence in marine structures

# Interaction with European and International Organisations



MoU with ECTRI signed in January 2006

## International Interfacing



## Participation in Technology Platforms

presence and/or membership in plenaries, steering groups, WGs



**ECTRI**

## Cooperation with other Associations

contacts / common interests, some common members



BAST, CDV, CERTH/HIT, DTU-Transport, INRETS, KTI, LNEC, SWOV, TOI, TRL, VTI, VTT

AIT, BAST, CDV, CEDEX, DVS, KTI, LNEC, TRL, VTI, VUD



# Members participation in European Projects

## ■ 7th FP and CIP

**120 transport research projects**, among them

- 2 Networks of Excellence (incl. NEARCTIS), 82 Collaborative Projects, 32 Coordination and Support Actions, 2 Marie-Curie (ITN), 2 CIP  
→ ECTRI directly supports the preparation of some projects

## ■ 6th FP

**113 transport research projects**, among them

- 6 Networks of Excellence, including HUMANIST, EURNEX and APSN (supported by ECTRI), 35 Integrated Projects, 41 Specific Targeted Research Projects, 28 Coordination and Support Actions and 3 Marie Curie actions (Transfer of knowledge)

## ■ COST

**European Cooperation in the Field of Scientific and Technical Research – Intergovernmental Network**

- 10 running actions in the ‘Transport and Urban Development’ domain

various thematic areas / all surface transport modes: rail, road, maritime, air, multimodal

# In FP6, ECTRI

was the coordinator of

NET-TRACK - [www.ectri.org/nettrack](http://www.ectri.org/nettrack)



Exchange of experience and transfer of knowledge in research management and soft research infrastructures issues between scientific communities active in transport research in the member / new member states, accession countries, and Western Balkan countries

was a partner in

EURFORUM - [www.eurforum.net](http://www.eurforum.net)



Research priorities for the urban mobility sector and creating a forum of stakeholders on urban mobility research; recommendations for the coordination of European research on urban mobility issues; Strategic Research Agenda issued

# In FP7, ECTRI

was/is a partner in

**YEAR 2010** - <http://year2010.fehrl.org>



The Young European Arena of Research 2010 is a competition for early-stage researchers exploring the area of surface transport within their research. The competition gives the students an opportunity to showcase their work to experts within the field, both on the web and, for the best applicants, at the Transport Research Arena conference, TRA2010 in Brussels in June 2010.

**DETRA** - <http://detra.fehrl.org>



The concept of DETRA derives from the so-called Lyon Declaration. In 2008, the Lyon Declaration signatories i.e. ECTRI, FERSI, FEHRL, EURNEX, HUMANIST, ISN and NEARCTIS committed themselves to work together on the deepening of the European Research Area (ERA) objectives in transport in order to address the Grand Challenges. From this commitment grew the objective to create a European Transport Research Alliance (ETRA) that could strengthen the transport domain. The key priorities of this Alliance are to examine the strengths, weaknesses, opportunities and threats (SWOT) in the domain and to develop common understanding and approaches to reducing fragmentation and overcoming barriers.

is associate partner in

**NEARCTIS** - <http://www.nearctis.org/>



NEARCTIS (A Network of Excellence for Advanced Road Cooperative Traffic management in the Information Society) is an Academic Network gathering the main teams working on the field of traffic management and optimisation, with a particular focus on cooperative systems for road traffic optimisation, but it covers a wider scope as it appears that cooperative systems have to be integrated into the whole traffic management systems.

# ECTRI and European Policies

(including FPs)

ECTRI as counterpart/advisor to the EC



## Inputs / contributions

- FPs updates / workprogrammes
- Consultations
- EC papers (green / white papers), etc



## Benefits:

"Economies of scale" of a collaborating European research community

Position reflected in European Policies

Members find areas of interest covered in calls



# Other Activities

## ■ International interfacing

- TRB (US Transportation Research Board)  
MoU signed in January 2006 in Washington, D.C
- OECD/ITF (International Transport Forum - A Worldwide Platform for Transport Ministers, Industry and Civil Society)

## ■ Participation and presence in conferences

- International
  - TRB Annual Meeting
  - World Congress on Intelligent Transport Systems
  - World Conference on Transport Research
  - World Congress on Railway Research
  - Road Safety on Four Continents
- European
  - Transport Research Arena
  - European Transport Conference
  - Intelligent Transport Systems Europe
  - EC conferences

Need Further Information – Have Questions?



[www.ectri.org](http://www.ectri.org)

[info@ectri.org](mailto:info@ectri.org)